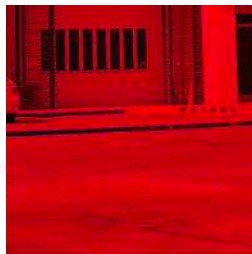




MAPUA
MALAYAN COLLEGES
LAGUNA



A.Y. 2025-2026 STUDENT HANDBOOK

TABLE OF CONTENTS

- 01** Mission and Vision of Mapúa MCL
 - Our Core Values
 - Our Mottos
- 02** Our Logo
 - Our Quality Policy
- 03** History of Mapúa MCL
- 05** The Academic Departments
- 08** Administrators and Officers
- 13** Academic Policies
- 34** Tuition Fees and Other Charges
- 35** Student Services
- 42** Extension Services
- 45** Administrative Services
- 52** Student Rules and Regulations: Overview

TABLE OF CONTENTS

- 63** Student Rules and Regulations:
Administration of Students
- 64** Student Rules and Regulations:
Standard Attire on Campus
- 74** Student Rules and Regulations:
Policies Governing Student Organization
- 79** Student Rules and Regulations:
Guidelines on the Management of
Student Organization
- 81** Student Rules and Regulations:
Guidelines on the Formal Dissolution of a
Student Organization
- 82** Guidelines on the Establishment
and Organization of Student Councils
- 86** Appendices
- 87** Mapúa MCL Student Handbook
Agreement

01

MISSION

1. To provide the learning environment that would transform our students into globally competitive professionals;
2. To produce social wealth from the generation of new knowledge;
3. To contribute to the solution of industry's and society's problems by the expert application of knowledge.

VISION

Being true to its nature, Mapúa MCL has to contend with other schools even as it collaborates with them in the advancement of common interests. Its stance shall be differentiation in the level of its services. It goes for the attainment of the highest quality educational standards.

In today's world, it makes sense to aim for global standards. The market for graduates is global. The market of students is global. There is no reason why the market for research and consultancy cannot be global.

Thus the vision statement:

"Mapúa MCL shall be a global steeple of excellence in professional education and research."

OUR CORE VALUES

Excellence, Loyalty, Teamwork, Discipline, and Urgency.

OUR MOTTO

"Excellence and Virtue"

OUR LOGOS



The College Seals

The globe represents the school's aspiration to be ultimately international in character, standard and reach. The letter "M" is for Malayan and is formed by a single helix representing a strand of DNA at the time of its replication. It represents life to the betterment to which the school commits itself.

The iconic figures stand for all the great minds that the faculty and students interact within the confines of the school: Albert Einstein representing science and technology, William Shakespeare representing the other realms of thought and expression, and Dr. Jose Rizal, Son of Laguna and "Pride of the Malay Race" representing the force of the Filipino intellect and will to change the world.

Mapúa MCL's logo was redesigned to represent the level of excellence that Mapúa MCL is striving to make itself known for. The goal was to make it scholastic, iconic and modern.

- The coat of arms or shield is a symbol of achievement, protection and identification.
- The single helix "M" is a symbol of the excellence embedded in our DNA.

OUR QUALITY POLICY

We commit to continually improve our management system to attain our student outcomes and program educational objectives.

03

HISTORY OF MAPÚA MCL

When the ownership of the Mapúa University (previously known as the Mapúa Institute of Technology) was transferred to the Yuchengco Group of Companies (YGC) under the stewardship of the honorable Ambassador Alfonso T. Yuchengco in the year 1999, a great amount of effort was put into improving the academic programs and facilities of the institution, thus raising Mapúa's level to be at par with international standards.

Through the years, new programs such as Computer Science, Information Technology, Material Science and Engineering, Biotechnology, Nursing, Psychology, Accountancy, and Hotel and Restaurant Management have been added to Mapúa's offering of Engineering and Architecture programs.

The expansion did not stop there, however. In fulfillment of the long term development plan of Mapúa, a six-hectare land was acquired for its expansion and presence in Laguna, which stands as one of CALABARZON's industrial and commercial hubs.

Groundwork started in late 2005, and on January 23, 2006, Malayan Colleges Laguna (MCL) acquired its corporate personality following its registration with the Securities and Exchange Commission.

This paved the way for the creation of an interim group geared to ensure the ultimate achievement of MCL's vision and mission statements. Under the leadership of Dr. Reynaldo B. Veal, Mapúa President and CEO, and formerly the MCL President and CEO, were the following members from Mapúa, namely: Milagros V. Reyes, former Mapúa Executive Vice President for Administration and Chief Operating Officer; Engr. Dodjie S. Maestracampo, then Executive Vice President for Academic Affairs; Engr. Dennis H. Tablante, Dean of the School of EE-ECE-CoE; Engr. Christopher F. dela Rosa, Director of Mapúa's Development Office for Information Technology; and Raoul A. Villegas, Controller of the Mapúa IT Center.



Dr. Dodjie S. Maestracampo
President and Chief Executive Officer

04

In November 2006, the Commission on Higher Education (CHED) gave the approval for MCL to offer eight (8) programs of study in Engineering, Information Technology, and Business. This was after MCL's satisfactory compliance with the standards of the CHED's Regional Quality Assurance Team. MCL started with over 860 freshmen students during its first year of operations. Its first two buildings were named after two significant personalities: Dr. Jose P. Rizal and Enrique T. Yuchengco.

Three (3) colleges were initially established under MCL: the Mapúa Institute of Technology at Laguna (MITL), the E.T. Yuchengco College of Business (ETYCB), and the College of Information Technology, which was later renamed as the College of Computer and Information Science (CCIS). The College of Arts and Science (CAS) and the Mapúa-PTC College of Maritime Education and Training (Mapúa-PTC CMET) were eventually added, followed by the Institute for Excellence in Continuing Education and Lifelong Learning (I-ExCELL).

In 2016, MCL Senior High School was established as MCL's response to the implementation of K-12 in basic education. To shelter the institution's growing community, the Albert Einstein Building was constructed, named after the scientist who, in his lifetime's work, exuded MCL's motto: Excellence and Virtue.

On February 2, 2022, Mapúa MCL launched its first digital college, Mapúa Malayan Digital College (MMDC), which offers flexible learning options for students who want to pursue B.S. Information Technology or B.S. Business Administration.

The first batch of students from MMDC were welcomed last August during the Academic Year 2022 - 2023. To better serve its students needs, MMDC established on-site learning hubs in Quezon City and Bacolod.

Last August 2022, Mapúa MCL announced its new business and health sciences program offerings that are in collaboration with Arizona State University (ASU), America's leading university for innovations. This is with the help of the Cintana Alliance, founded by Douglas Becker. The ASU-Cintana Alliance enables universities from different parts of the world to provide top-notch education by increasing their quality and scale, which is vital in building globally competitive professionals.

By 2023, the institution has achieved several more milestones with its partnerships with Arizona State University for its business and health sciences programs, and the Business College of Athens for its master's degree programs in the field of maritime education; as well as with the approval of the Securities and Exchange Commission of the rebrand of Malayan Colleges Laguna to Mapúa Malayan Colleges Laguna. This new name allows Mapúa MCL to fully embrace its roots and Mapúa heritage, and gives students the opportunity to start their respective career paths immediately after graduation.

Today, Mapúa MCL offers four (4) Senior High School strands under the Academic and Technical-Vocational-Livelihood Tracks; over twenty college programs catering to the fields of engineering, architecture, business, health sciences, information technology, multimedia arts, maritime education, and nursing; two (2) fully on line degree programs; several certification programs under the Institute for Continuing Education and Lifelong Learning (I-ExCELL); and master's degree programs.

05

THE ACADEMIC DEPARTMENTS

COLLEGE OF ARTS AND SCIENCE (CAS)

- B. Multimedia Arts
- B.A. Communication

COLLEGE OF COMPUTER AND INFORMATION SCIENCE (CCIS)

- B.S. Computer Science
- B.S. Information Systems

COLLEGE OF HEALTH SCIENCES (CHS)

In collaboration with Arizona State University

- B.S. Biology
- B.S. Psychology

COLLEGE OF NURSING (CN)

In collaboration with Arizona State University

- B.S. Nursing

E.T. YUCHENGO COLLEGE OF BUSINESS (ETYCB)

In collaboration with Arizona State University

- B.S. Accountancy
- B.S. Tourism Management
- B.S. Accounting Information System
- B.S. Global Management
- B.S. Business Administration
 - Major in Financial Management
 - Major in Marketing Management
 - Major in Operations Management
- B.S. Business Intelligence and Analytics
- B.S. Marketing
- B.S. Hospitality Management

MAPÚA INSTITUTE OF TECHNOLOGY AT LAGUNA (MITL)

- Bachelor of Science in Architecture
- Bachelor of Science in Chemical Engineering
- Bachelor of Science in Civil Engineering
- Bachelor of Science in Computer Engineering
- Bachelor of Science in Electrical Engineering
- Bachelor of Science in Electronics Engineering
- Bachelor of Science in Industrial Engineering
- Bachelor of Science in Mechanical Engineering

06

MAPÚA MCL DeX (Fully Online Degrees)

- B.S. Electronics Engineering
- B.S. Industrial Engineering

MAPÚA MALAYAN DIGITAL COLLEGE (MMDC)

- B.S. Information Technology
 - *Major in Software Development*
 - *Major in Network and Cybersecurity*
 - *Major in Data Analytics*
- B.S. Business Administration
 - *Major in Marketing Management*
 - *Major in Human Resources Management*
 - *Major in Operations Management*

MAPÚA-PTC COLLEGE OF MARITIME EDUCATION AND TRAINING (MAPÚA-PTC CMET)

- B.S. Marine Engineering
- B.S. Marine Transportation

GRADUATE PROGRAMS

In partnership with The Business College of Athens

- Master of Science in Shipping Business
- Master of Science in Marine Engineering Management
- Master of Science in Logistics and Supply Chain Management

MAPÚA MCL SENIOR HIGH SCHOOL

Academic Track

- Science, Technology, Engineering and Mathematics (STEM)
- Accountancy, Business and Management (ABM)
- Humanities and Social Sciences (HUMSS)

Technical-Vocational-Livelihood Track

- Information and Communications Technology (ICT)

07

CERTIFICATION PROGRAMS

- Diploma in Culinary Arts
- Coursera
- LinkedIn Learning
- Adobe Certified Professional
- Apple / Swift
- Autodesk Certified User
- Cisco Certified Support
- Communications Skills for Business Certification
- Entrepreneurship Certification
- Digital Literacy Certification
- Information Technology Specialist
- Intuit/ Certified Bookkeeping Professional
- Microsoft Office Specialist
- Microsoft Certified Educator
- Microsoft Certified Fundamentals
- Project Management Certification
- Unity Certification (Game Development)
- Corporate Training
- Course and Curriculum Development

ADMINISTRATORS AND OFFICERS

BOARD OF TRUSTEES

The Board of Trustees is the primary governing body of Mapúa MCL. It is composed of a Chairman and several members that are elected at large during a regular meeting of the collegial body. Administration and operations of Mapúa MCL are directed by the decisions of the board which is the highest policy-making body of the Institution within the framework of the organization and its corporate governance.

The Board has the power to create and abolish the management committee and ratify appointments of Mapúa MCL's officers, issue authorization of Mapúa MCL's top management officers for specific capacities and missions, as well as confirming statutes of the Academic Council, such as, but not limited to, declaration of graduates, conferment of awards and other resolutions that need the concurrence of the board.

MANAGEMENT COMMITTEE

The Management Committee (ManCom) is a permanent body created by the Board of Trustees to oversee the operations and management of Mapúa MCL to ensure that it serves its mission, vision, and interests of its stakeholders. Membership to this committee is directed by the Chairman of the Board of Trustees from the top management officers of Mapúa MCL specifically the Chief Executive Officer, Chief Finance Officer, Chief Operating Officer, Chief Administration Officer; and representatives of Mapúa MCL's subsidiaries particularly the Mapúa University and the House of Investments.

OFFICE OF THE PRESIDENT AND CHIEF EXECUTIVE OFFICER

This office handles the institutional decision-making and overall development plan of Mapúa MCL. The President is the Chief Executive Officer who is responsible for the efficient and effective administration of Mapúa MCL towards the realization of its goals and objectives. The President oversees school administration, supervision, and

implementation of governing board policies. Therefore, all the details and specific arrangements in carrying out the policies and general plans of the institution as worked out by the President should have the necessary financial and material aid and moral support of the Board.

OFFICE OF THE EXECUTIVE VICE PRESIDENT AND CHIEF OPERATING OFFICER

This office handles the overall supervision and administration of Mapúa MCL to ensure the alignment and consistent implementation of policies, procedures, and strategies, and the effective delivery of functional support and services. The Executive Vice President (EVP) is the Chief Operating Officer of Mapúa MCL. The EVP is appointed by the President to manage, direct, and control the operations of the entire institution. He/she is responsible for its efficient, effective, and orderly operations. As part of the top management, and as a member of the Executive Committee, the EVP participates in formulating major policy decisions for Mapúa MCL. The EVP assists the President in all matters affecting the general policies of the entire institution.

OFFICE OF THE SENIOR VICE PRESIDENT FOR FINANCE / CHIEF FINANCE OFFICER

This office is responsible for the management of the budget, finance, and accounting and financial analysis concerns of Mapúa MCL to ensure that the institution is maximizing its resources. The Chief Finance Officer (CFO) is the custodian of the funds of Mapúa MCL and is responsible for all money and property under his charge. The CFO keeps full and accurate records and accounts of all receipts, disbursements, assets, liabilities, and general financial transactions of Mapúa MCL. The key offices under the Office of Vice President for Finance are Accounting Office (ACO), Blue and Silver Bookshop, Purchasing Office (PO), and the Treasurer's Office (TO).

OFFICE OF THE SENIOR VICE PRESIDENT FOR ADMINISTRATION AND LEGAL / CHIEF ADMINISTRATIVE OFFICE AND LEGAL

This office handles the overall supervision non-academic services and operations inside Mapúa MCL. The Senior Vice President for Administration (SVPA) ensures a productive

ADMINISTRATORS AND OFFICERS



and healthy work environment among the members of the Mapúa MCL community. The SVP devises organized work systems and sustains a conducive workplace to uphold total performance efficiency of Mapúa MCL employees. The office also handles legal matters pertaining to the administration of Mapúa MCL.

The key offices under the office of the SVPA are the: Office of the Assistant Vice President for Human Resources and Administrative Services (OHRAS); Instructional Facilities Office (IFO); Information Technology Services Office (ITSO); and the Purchasing Office (PO). Under OHRAS are the: Human Resources and Management Office (HRMO); Center for Health Services and Wellness (CHSW); and Campus Development and Maintenance Office (CDMO).

OFFICE OF THE VICE PRESIDENT FOR ACADEMIC AFFAIRS

This office handles the overall supervision and development of programs of all the colleges and other academic departments. As the chief academic officer, the Vice President for Academic Affairs provides leadership in all academic programs and supports the missions of respective Colleges, Institute, and the Senior High School Department to ensure overall academic excellence.

The key offices under the OVPAA are the Office of the Assistant Vice President for Academic Services (OAS), Research Promotion and Coordination Office (RPCO); Student Affairs Office (SAO); Learning Environments and Innovations Office (LEIO); Athletics and Physical Education Office (APEO); and the Center for Service- Learning and Community Engagement (CSCE). Under OAS are: Registrar's Office (RO); Center for Learning and Information Resources (CLIR); Office for Strategic Partnerships and Global Engagement (OSPGE); and Alumni Center.

ACADEMIC COUNCIL

The Academic Council is composed of key officers throughout the Institution who meet to discuss and decide on issues and promulgations that have an overall effect on the entire organization or its major components thereof. It is responsible for the quality of academic performance. It evaluates curriculum and faculty academic performance, recommends academic policies, plans programs, sets standards, and reviews guidelines for implementation by the different colleges and concerned offices. The members of the Academic Council are the Vice President for Academic Affairs, Executive Vice President, Deans, Program Chairs, and Directors of the different academic offices.

ADMINISTRATORS AND OFFICERS



COLLEGE DEAN

The College Dean is the senior officer responsible for the operation of an academic program, the enforcement of rules and regulations and the supervision of all activities of his/her college. The Dean is responsible for the academic operations and the selection of faculty members, the quality of instruction, and the academic budget.

PROGRAM CHAIR / COORDINATOR

The Program Chair is responsible for providing professional support and assistance in the implementation of academic programs and enforcing approved academic and administrative policies, procedures, and rules and regulations involving his academic program. He or she exercises educational leadership among his or her faculty members and cooperates in activities towards the attainment of the program educational objectives.

CLUSTER COORDINATOR

The Cluster Coordinator assists the College Dean in coordinating the activities and functions of a designated cluster to ensure that goals and objectives specified for general education and other relevant courses are accomplished in accordance with established priorities. The Cluster Coordinator also provides academic leadership among the faculty members under the cluster.

SENIOR HIGH SCHOOL PRINCIPAL

The Senior High School Principal is a member of the faculty of the Senior High School Department who is appointed to perform administrative, academic, and instructional leadership functions of the department. The principal is directly reporting to the Vice-President for Academic Affairs and Chief Academic Officer. As department head, the principal has direct control and supervisory functions over the Assistant Principal and Course Coordinators including positions that may be appointed to serve and perform specific responsibilities for its management and operations.

The Principal is a permanent member of the Academic Council Core Group and also chairs any sub-committee or ad hoc body that may be formed relevant to SHS's administration, and management.

12

DIRECTOR / ACADEMIC OFFICER

Directors are the heads of offices and centers that serve to support academic departments of Mapúa MCL. Generally, directors are classified as non-teaching administrator except for instance where they are assigned with auxiliary academic functions and responsibilities. For offices whose main function has no direct link to students, “manager” is used as the official appointment of its department head.

As of this publication, Directors head the following officers/ centers of Mapúa MCL:

1. Alumni Center
2. Office for Strategic Partnerships and Global Engagement
3. Athletics and Physical Education Office
4. Campus Development and Maintenance Office
5. Center for Health and Services and Wellness
6. Center for Learning and Information Resources
7. Center for Service-Learning and Community Engagement
8. Human Resources Management Office
9. Information Technology Services Office
10. Instructional Facilities Office
11. Learning Environments and Innovation Office
12. Admissions and Student Recruitment Office
13. Office for Educational Content and Management
14. Office for Quality Management
15. Office for Risk Management and Business Continuity
16. Purchasing Office
17. Registrar’s Office
18. Research Promotion and Coordination Office
19. Student Affairs Office

ACADEMIC POLICIES

ADMISSION OF APPLICANTS FOR DEGREE PROGRAMS AND SENIOR HIGH SCHOOL PROGRAMS

Mapúa MCL categorizes applicants for degree programs as either a freshman, a transferee, or a degree holder. Appropriate admission examination and/or its equivalent is administered to qualified applicants based on the degree of their acquired knowledge and proficiency.

Starting A.Y. 2025-2026, Mapúa MCL has reverted to the traditional process of administering a diagnostic/entrance examination prior to applicants' admission at Mapúa MCL. The examination shall be called "Mapúa MCL Diagnostic/Entrance Examination" and is conducted on-site through Mapúa MCL's Learning Management System, Blackboard Learn. The undergoing of the said examination shall be applicable to students applying for regular undergraduate and Senior High School programs, including Grade 12 transferees.

APPLICATION REQUIREMENTS FOR FRESHMAN

The following documents are to be submitted by college freshman applicants who were approved for admission to enroll in college:

1. Duly accomplished application form through this link.
2. Photocopy of any of the following:
 - Grade 12 report card
 - Certificate of candidacy for graduation
 - Grade 12 School ID
 - Bureau of Alternative Learning System (BALS) or Philippine Educational Placement Test Certificate of Passing

Additional for graduates of high school from the old High School curriculum:

1. Photocopy of high school report card; and
2. Certificate of available Form 137-A

14

NOTES:

- Mapúa MCL-SHS graduates are required to take the diagnostic/entrance examination. However, it is not compulsory for them to pay the application fee.
- A foreign applicant who is a non-native speaker of English must submit TOEFL/IELTS examination results.
- Application and examination results are valid for one (1) academic year.
- Applicants who lost their report card must submit a Certificate of Eligibility to Transfer to College / Tertiary Education, and Notarized Affidavit of Loss.
- Maritime applicants must pass the recommended medical examination administered by a Mapúa MCL accredited clinic.

ENROLLMENT REQUIREMENTS FOR FRESHMEN

The following documents are to be submitted by college freshman applicants who were approved for admission to enroll in college:

1. Original Grade 12 report card duly signed by the Senior High School Principal showing the applicant's eligibility for admission to college and Learner Reference Number.
 - a. The principal/adviser must countersign the report card if it has erasures or alteration.
 - b. The applicant must submit a certificate of the school's numerical equivalent if the report card contains alpha grades.
 - c. The applicant must submit an authenticated report card if he graduated from an international school.
 - d. The applicant must submit a gap year letter with the signature of the parent/applicant of legal age stating that the Form 137-A is still in the school file and has not been forwarded to any colleges or universities if the applicant graduated in previous years.
2. Certificate of Good Moral Character from the Senior High School Principal (with the issued year of graduation and school seal)

3. Photocopy of PSA birth certificate (original must be presented for verification)

If the applicant is not a Filipino citizen, submit:

- a. original and photocopy of passport with remaining validity of at least 6 months
- b. Alien Certificate of Registration (ACR)
- c. Student visa or student study permit

If the applicant has dual citizenship, submit

- d. Certificate of recognition as a Filipino citizen or Philippine Passport;
- e. Authenticated birth certificate

4. Two (2) pieces 1.5" x 1.5" recent identical pictures with plain background and signature at the back).

5. Medical Clearance Form from CHSW for Maritime enrollees.

6. *International Students Requirements for Enrollment:

- a. Original and photocopy of passport with remaining validity of at least 6 months
- b. Original and Photocopy of Visa
- c. Original and Photocopy of Birth Certificate

APPLICATION REQUIREMENTS FOR NON-FRESHMEN

The following are the requirements to be submitted by non-freshman applicants to be able to take the Mapúa MCL Qualifying Examination:

1. Duly accomplished application form through this link
2. Original and photocopy of Transcript of Records (TOR) or of photocopy of Certified True Copy of Grades issued by Registrar's Office.
3. One (1) piece 1.5" x 1.5" ID picture with plain background.
4. Certified True copy of course description (for course crediting purposes)
5. Duly accomplished crediting form.

NOTES:

A Mapúa transferee with good academic standing must take the profiling examination. If passed, then the applicant will proceed with the Pre-enrollment procedures. If failed, an interview with the Center for Guidance and Counseling will be set.

- A Mapúa transferee under probationary status or disqualified from the current Mapúa program must take the qualifying examination. If passed, an interview with the Center for Guidance and Counseling will be conducted. Otherwise, the applicant will not be permitted to enroll.
- An applicant's previous program should be CHED accredited in order for the courses to be credited.
- For an applicant who has been absent / inactive for more than 5 years from the previous college or university, a recommendation letter (employer, barangay) shall be submitted in lieu of the good moral character certificate.
- A foreign applicant who is a non-native speaker of English has to submit TOEFL/IELTS examination results. If the applicant has not taken the TOEFL or IELTS or failed the exam upon application, the student is requested to take an English course in Mapúa MCL as an Audit Course prior to admission as transferee.
- Application and examination results are valid for one (1) academic year.
- Admission of non-freshmen is allowed during regular terms only.

ENROLLMENT REQUIREMENTS FOR NON-FRESHMEN

The following documents are to be submitted by those non-freshmen who passed the Mapúa MCL Qualifying Examination to enroll in college:

1. Original copy of one of the following:
 - Transfer Credential Certificate;
 - Honorable Dismissal Certificate;
2. Original Transcript of Record (TOR). This should be authenticated by the Philippine Embassy from country of origin if the applicant is a graduate from an international school.
3. Original or certified True copy of course/subject description
4. Original Good Moral Character Certificate
5. Original and Photocopy of PSA birth certificate (original to be presented for verification purposes)
 - a. If the applicant is not a Filipino citizen, submit:
 - Original and photocopy of passport with remaining validity of at least 6 months;
 - Alien Certificate of Registration (ACR);
 - Student visa or student study permit.



b. If the applicant has dual citizenship, submit

- Certificate of recognition as a Filipino citizen or Philippine Passport;
- Authenticated birth certificate

6. Two (2) pieces 1.5" x 1.5" recent identical pictures with plain background.

7. Medical Clearance Form from CHSW or CMET Conditional Enrollment letter for applicants enrolling for BS Marine Transportation (MT) and/ or BS Marine Engineering (MARE).

STUDENT ENROLLMENT GENERAL GUIDELINES

Mapúa MCL students are expected to pursue their studies on a full-time basis and to self-manage their registration of courses each term. For each Mapúa MCL degree program, there is an approved course of study that meets college and institute requirements.

Undergraduate degree programs require full-time enrolment which are defined by the student's program curriculum. Unless permission is granted by the college enrolled graduate students must maintain his total course load within the prescribed limits.

A certificate of matriculation is electronically accessible to student upon successful registration of his courses each term. Amendments to a student's course load may be allowed within the prescribed period. These include but are not limited to revision of course load and dropping of courses. Withdrawal of enrollment is allowed within the prescribed period and subject to approval of the authorities concerned.

Students who cannot enroll in a regular term must seek a Leave of Absence (LOA) approval within the prescribed period. Students who seek to be re-admitted after his Leave of Absence (LOA) must request for reactivation of his status.

REGISTRATION IN A COURSE

A student is considered registered and enrolled upon issuance of the Certificate of Matriculation (CM) made available online. Subsequently, his name shall appear in the Official Class Lists of all his instructors.

The following are the types of courses that may be enrolled:

- **REGULAR** – a course listed in the respective curriculum of the program of study and is currently offered.
- **PETITION** – a course listed in the respective curriculum of the program of study which is not offered during the current term but was requested by less than the required number of students.
- **AUDIT** – a course enrolled by a student that is outside his current program curriculum. It is meant to provide deeper course appreciation but will not earn course credit units to the current student's program curriculum.

Students enlist their preferred courses and assign sections during course enlistment and course sectioning period, respectively, through the online enrollment system using their Mapúa MCL accounts.

A student must go to his program chair for enrollment advice in case he has concerns with his course load. Enrollment Advising Slip is filled out by the program chair and forwarded to the Registrar's Office for enrollment processing.

MAXIMUM COURSE LOAD

Under the Trimester Plus system of Mapúa MCL, the regular academic calendar consists of three (3) regular terms of fourteen (14) weeks each.

The maximum student load per regular term is as prescribed by the curriculum of the student.

19

PRE-REQUISITE COURSE REGULATION

As prescribed by the Commission on Higher Education, courses taken and completed without satisfying the prescribed pre-requisites shall not be given credit.

A student who receives a grade of INC (Incomplete) in a pre-requisite course shall not be allowed to take its advanced courses. The student must first complete/pass the pre-requisite course before he is allowed to take any of its advanced courses.

CO-REQUISITE COURSE REGULATION

A co-requisite is a course which must be completed before or enrolled concurrently with, the course for which it is prescribed.

REVISION OF COURSE LOAD

A student who has paid his fees during enrollment but who wishes to apply for revision due to erroneous course load may do so at the Registrar's Office during the "Revision of Load" period. Students must fill out the request form available at the Registrar's Office.

Failure to revise the course load within the prescribed period shall mean payment of fees for dropped courses.

A student enrolled in abolished classes shall be issued a refund provided he formally applies for a revision of his course load at the Registrar's Office during the prescribed period. Failure to revise the load shall be construed as a waiver of the right to any refund of fees paid by the student.

No student shall be allowed to add courses to her current load after the revision period.

Revision of course load should not violate the following:

- the pre-requisite course regulation
- the co-requisite course regulation

ABOLITION OF SECTIONS AND CONVERSION TO SPECIAL SECTIONS

• If the number of students enlisted in a class / section (of a course that is not a regular offering for the term) is below the minimum set by Mapúa MCL, then the course shall be abolished. The said class / section, however, may be converted into a Special class.

• The College offering the course shall post a list of "Abolished Classes," which is set on the last day of the first week of classes.

• An abolished class / section may be converted to a Special class section on the following grounds:

- a. A request emanating from the students has been filed with the college.
- b. There's a faculty member available to handle the class/section.
- c. There are facilities available.

OFFERING OF PETITION COURSES

Students may request the opening of a petition course to their respective colleges on or before the schedule set by the Registrar's Office.

Students proceed to Registrar's Office for enrollment of the approved petition course. No students shall be allowed to enroll in a petition course after the schedule.

Students who do not proceed with enrollment of the petitioned course will be subject to disciplinary action upon the initiative of the Registrar's Office. Revision of enrolled Special course shall not be allowed.

An Integrative course is exempted from being offered as a petition course. A petition course may be requested as a Special class if a student will be:

- a. further delayed due to phased out courses or seasonally offered courses.
- b. in his penultimate term or a candidate for graduation.

Requests for creation of Special classes must be submitted to the Deans not later than the deadline set by the Registrar's Office.



ATTENDANCE

No student shall be given credit in any course unless he is enrolled in the course and attends his classes regularly.

Based on the ruling of the Commission on Higher Education (CHED) a student who accumulates absences of more than 20% of the prescribe number of meetings in one

(1) term may be given a final grade of “5.00” or “F” (FAILED).

NO. OF UNITS PER COURSE (LECTURE OR LFD)	NO. OF ABSENCES
1	3 ABSENCES
2	5 ABSENCES
3	7 ABSENCES
4	9 ABSENCES
5	11 ABSENCES

**LFD stands for Laboratory, Field, Design, Design or Drawing courses*

In cases of excused absences, the student concerned must present a written explanation duly approved by the Prefect of Students.

A student is considered excused if he/she officially represents:

- Mapúa MCL in external activities; and/or
- his/her college in inter collegiate activities.

The Prefect of Students may endorse a student to be given due consideration by the faculty for valid causes (e.g. sickness) other than the above-mentioned. Such consideration may be in the form of but not limited to giving the opportunity to take missed assessment or graded activities.

NOTE:

Under our current fully online mode of course delivery, the above attendance policies are temporarily waived subject to such guidelines that may be issued by the Office of the Vice President for Academic Affairs (OVPA) covering synchronous and asynchronous learning engagements.



OFFICIAL DROPPING OF COURSES

A student desiring to drop a course must do so not later than the deadline set by the Registrar's Office. Any student who is allowed by the Registrar to drop the course for justifiable reasons shall be given a grade of "DRP".

A student wishing to drop a course must fill out the Application for Official Dropping of Course at the Registrar's Office and must do so not later than the 10th week of classes. Dropping of all courses is not allowed.

A student caught cheating during the examination shall not be allowed to drop a course; he must be reported to the Prefect of Discipline at the Center for Student Activities and Discipline (CSAD).

Students who intend to drop a course shall obtain clearance from the CSAD and the Registrar's Office.

Request to drop a course should not violate the pre-requisite course regulation.

Dropping a course that is a co-requisite of another course constitutes dropping of both courses.

In cases wherein the student fails to officially drop a course, the faculty member shall be guided by the following:

- The student shall be given a final grade of "5.00" or "F" (Failed); or,
- The student shall be given a final grade of "5.00" or "F" (Failed) if they failed to show up.

The grade of "DRP" can neither be removed nor completed. It has no bearing on the rules regarding refunds or payments made as stipulated in a memorandum from the Commission on Higher Education (CHED).

The Mapúa MCL GRADING SYSTEM

Mapúa MCL will follow the numerical or letter grades for all courses under baccalaureate and certificate programs as indicated in the table below:

Numeric grades will be used for all academic and PE courses.

GRADE	SCORE	BACCALAUREATE PROGRAM	CERTIFICATE PROGRAMS
1.00	Above 96.00 = 1.00	Excellent	-
1.25	91.51 – 96.00	Superior	-
1.50	87.01 – 91.50	Very good	-
1.75	82.51 – 87.00	Good	-
2.00	78.01 – 82.50	Meritorious	-
2.25	73.51 – 78.00	Very satisfactory	-
2.50	69.01 – 73.50	satisfactory	-

2.75	64.51 – 69.00	Fairly Satisfactory	-
3.00	60.00 – 64.50	Passed	-
5.00	Below 60.00	Failed	-
INC		Incomplete	Incomplete
DRP		Dropped	Dropped
P		Passed	Passed
C		Continuing	Continuing
F		Failed	Failed
AUD		Audit	Audit
IP		In Progress	-

Letter grades will be used in non-academic, correlation and major integrative courses. The grades obtained from these courses are excluded in the computation of the student's general weighted average.

Grade	Baccalaureate	Certificate programs
DRP	Dropped	Dropped
P	Passed	Passed
C	Continuing	Continuing
F	Failed	Failed
AUD	Audit	Audit
IP	In progress	-

A grade of 5.00 or F will be given to a student who: failed to meet the minimum final grade; incurred absences as enrolled in the course but has not attended in any session; unofficially dropped; or has a proven case of academic dishonesty.

A faculty member is given the discretion to give a passing mark to a student who has obtained a passing final grade despite having excessive absences that are beyond the maximum allowable.

A grade of "INC" will be given to a student who fails to take the final examination or complete other course requirements due to illness or other valid reasons, provided that the projected completion results of the deficient final course requirement/s will merit a passing grade when integrated in the final computation of the grade.

The grade of "INC" must be completed within the succeeding term; otherwise, the grade of "INC" lapses and the student shall be given a grade of "5.00" or "F".

A grade of "C" will be given to a student who is enrolled in major integrative courses and is unable to finish the required coursework. A corresponding final grade is given when the deficiency has been completed and evaluated within the period determined by the instructor concerned.

The grade of "C" must be completed within one year from the time the "C" was

obtained; otherwise the grade of “C” lapses and the student shall be given a grade of “5.00” or “F”.

Students who obtained a grade of “INC” and “C” in a course shall observe the following procedure within the first week of the succeeding term:

1. The student must secure and submit the accomplished Request to Complete Course Form to the Registrar’s Office.
2. Student proceeds to arrange the completion schedule with the professor concerned.
3. Student pays for the corresponding fee at the Treasurer’s Office.
4. Student submits duly filled out Request to Complete Course form to Registrar’s Office.
5. Student proceeds to do the completion work.
6. Faculty member secures the Completion Grade Form from the Registrar’s Office.
7. Once the grade has been decided on, the Faculty member submits the accomplished Completion Grade form to the Office of the Dean for approval.
8. The Office of the Dean, forwards the form to the Registrar’s Office.
9. The Registrar’s Office personnel reflects the grade to the personal record of the student.
10. Student claims his copy of the Completion Grade form from the Registrar’s Office.

A grade of “DRP” will be given to a student who officially dropped the course within the prescribed period.

The grade “AUD” is given to a student who is enrolled in audit courses.

The grade “IP” is given to a student enrolled in a course which is designed to be taken for more than one term.

GUIDELINES FOR SHIFTING TO ANOTHER PROGRAM

SHIFTING is the voluntary transfer from one program to another program. A student may be permitted to shift from one program to another if his readmission status is “OK”.

A student may shift several times from one program to another upon approval of his shifting application.

Shifting to another program shall take effect on the succeeding term after the request to shift has been approved.

STATUS REVIEW (FOR BACCALAUREATE PROGRAM)

Mapúa MCL reviews the academic status of a student enrolled in a baccalaureate program at the end of every academic year.

The basis for identifying the academic status of a student is the General Weighted Average (GWA) which is the weighted average of all academic courses included in the program of study of the student taken with numerical grades. It is computed at the end of the third term of the academic year.

Academic Status	Condition/s
OK	$1.00 \leq GWA \leq 3.5$
Probatory	$3.50 \leq GWA \leq 4.50$
Out of the program	<p><i>Any of the following conditions:</i></p> <p><i>a. $4.50 < GWA \leq 5.00$</i></p> <p><i>b. Two (consecutive years classified under Probationary Status; and</i></p> <p><i>c. While under probationary status, a student failed for the third time any course stipulated in the first two years of his curriculum including PE, NSTP, and Values Education</i></p>

A student with probationary status will be subjected to appropriate academic advising and/or intervention program.

A student disqualified to continue in the program may apply for readmission to another program where he may be qualified (see Guidelines for Readmission to Another Program Due To Disqualification). Otherwise, he must secure Transfer Credentials from the Registrar's Office.

GUIDELINES FOR READMISSION TO ANOTHER PROGRAM DUE TO DISQUALIFICATION

A student disqualified from one program due to failure to comply with the academic requirements may request for transfer to another program. Upon approval of his transfer, he shall not be allowed to return to the program where he was disqualified, regardless of an improved academic standing.

A student disqualified from an engineering program under the Mapúa Institute of Technology at Laguna cannot transfer to any other engineering program. Acceptance to the new program is at the discretion of the Dean.

MAXIMUM RESIDENCY RULE

The Maximum Residency which is the prescribed period of residency in a program is equivalent to twice the number of years based on the curriculum.

A student must complete all requirements of the degree program within the maximum prescribed period which will be inclusive of all Leaves of Absence (LOA) whether official or unofficial.

A student who failed to complete all requirements of his degree program within the prescribed period will not be allowed to register further in that college. The Program Chair may recommend courses of action for approval by the Dean once the student exceeds the maximum residency prescribed by the program of study.

THE FINAL GRADE REPORT

At the end of each term, the student's official Final Grade Report (FGR) may be accessed and viewed through the Mapúa MCL student account. The FGR contains the following information about the achievement of the student:

- Student Name
- Student Number
- Academic Year and Term
- All courses officially enrolled including the number of units
- Term Weighted Average (TWA)
- General Weighted Average (GWA) (every third term of the academic year)
- Date accessed / generated

DEAN'S LIST AWARDS

Every end of each regular term, the Dean's List will be announced for each academic program. The Candidates for Dean's List will be provided by the Registrar's Office to the offices of the College Deans and the Student Affairs Office.

A student must satisfy the following requirements to be included in the Dean's List in a particular term:

- Has no failed course grades (F, FA, 5.00), in any course.
- Has no course grade of INC (Incomplete), C (Continuing), or DRP (Dropped) for the term.
- Has a Term Weighted Average (TWA) of 1.75 to 1.00.

- Enrolled in the prescribed curricular units for the term.
- Has been cleared by the Prefect of Discipline from any record of commission of a major offense.

A student who has obtained NR (No Report) or erroneous grade should inform his/her instructor for grade correction. To be considered in the Dean's List Award, NR or erroneous must be changed to a passing mark within two weeks after the deadline of submission of final grades. Failure to do so disqualifies the student for the Dean's List Award.

The Colleges will recognize their respective Dean's List awardees during the next regular term.

PRESIDENT'S LIST AWARDS

At the end of the academic year, the President's List will be announced for each academic program. The President's List Candidates will be provided by the Registrar's Office to the Office of the Vice President for Academic Affairs.

A student must satisfy the following requirements every end of the third term of the current academic year to be included in the President's List:

- Has no failed course grades (F, FA, 5.00), in any course.
- Has no course grade of INC (Incomplete), C (Continuing), or DRP (Dropped).
- Has an Academic Year General Weighted Average (TWA) of 1.50 to 1.00.
- Has not been academically dismissed (out of the program) from a previous program.
- Has been cleared by the Prefect of Discipline from any record of commission of a major offense.

The Office of the Vice President for Academic Affairs will recognize the President's List awardees during the Mid-Year term.

CANCELLATION OF ENROLLMENT

Any student who wishes to discontinue his studies during the term must notify the Registrar's Office in writing not later than the 10th week of the term. The cancellation shall take effect only upon receipt of his application for cancellation by the Registrar. A student who filed for cancellation of enrollment within two (2) weeks from the beginning of classes is eligible for refund in accordance with Section 100 of the 2008 Manual of Regulations for Private Schools (MORPHE) that states:

"Unless otherwise provided by institutional policies, rules and regulations, a student who transfers or withdraws, in writing, within two (2) weeks after the beginning of 20 STUDENT HANDBOOK Revised A.Y. 2025-2026."

classes, and who has already paid the pertinent tuition and other school fees in full or for any length longer than one month, may be charged twenty-five percent (25%) of the total amount due for the school term if he withdraws within the first week of classes, or fifty percent (50%) if within the second week of classes, regardless of whether or not he has actually attended classes. The student may be charged for all the school fees in full if he withdraws any time after the second week of classes."

Non-compliance with two-week cancellation period shall result in the forfeiture of the student's right to any refund of fees paid by him.

A student shall not be allowed to cancel his enrollment without the written consent of his parents or guardian. Together with the Application for Cancellation of Enrollment, the following documents must be submitted to the Office of the Registrar on or before the deadline set by the Registrar's Office:

1. A copy of certificate of matriculation (downloadable from Mapúa MCL student account).
2. A request letter from the student, if of legal age, or parents or guardian if not.
3. A clearance from the Treasurer's Office.

A student who wishes to return in the following term after his cancellation of enrollment need not apply for reactivation.

LEAVE OF ABSENCE

A student who needs to go on leave of absence (LOA) for a period of more than one term should file a written petition to the Dean. The petition should state the reason for the leave and should specify the duration of the leave.

The college, through the Dean or his duly authorized representative, shall inform the College Registrar of every student granted the leave of absence indicating the reasons for such leave. No leave of absence shall be granted later than two weeks before the last day of classes during the term it was filed. Failure to file for an LOA shall impinge on scholarships, awards, and honors that a student may enjoy as it affects the student's residency.

PRACTICUM

Mapúa MCL provides a comprehensive practicum program to institutionalize the conduct and implementation of practicum courses for all academic programs. The program includes qualifying guidelines for companies and institutions that would participate as hosts for the practicum program and would foster an industry-based learning environment.

In coordination with the host company, Mapúa MCL shall:

1. Establish the terms and conditions of the practicum program, which the student must agree with to be able to realize the conduct of the course and its objectives.
2. Monitor the performance, attendance, and accomplishments of the students during their practicum.
3. Invoke the evaluation of the practicum supervisor from the host company in assessing the performance of the student.

4. Evaluate the learning environment of the host company based on the student's feedback to provide a more efficient administration of the practicum program.

NOTE:

BS Marine Transportation and BS Marine Engineering students who have completed the classroom instruction for Onboard Training (OBT) will undergo such training as their practicum in accordance with pertinent government regulations for this specialized training. Students who opt not to pursue or undertake the required OBT are required to execute and submit to the OBT officer a duly notarized Affidavit of Undertaking.

GRADUATION

Upon satisfactory compliance with all requirements as prescribed in the program, a student may be granted a degree subject to the recommendation of the Dean and the faculty members of the College under the following conditions:

1. All requirements of the program shall have been submitted on or before the deadline set by the Registrar's Office.
2. The candidate must have settled all financial obligations with Mapúa MCL.
3. The candidate must not have any pending disciplinary case, or current suspension, exclusion, or expulsion penalty with the Center for Student Activities and Discipline.

A student who is expecting to complete the coursework of his degree program within the next two terms has to file his candidacy for graduation, accompanied by the appropriate fee, by the deadline set by the Registrar's Office. Students who apply for graduation and who do not complete the degree requirements within the prescribed deadline may reapply for graduation and pay the corresponding fee on the succeeding term.

Eligible graduating student will be endorsed by his college and will be subject to the approval of the Academic Council, President, and the Board of Trustees. Mapúa MCL will confer the academic degrees and certificates through the conduct of a commencement exercise.

Students eligible to graduate may opt to defer their graduation by informing Mapúa MCL in writing. The maximum period of deferral is until the next graduation ceremony.

Students eligible to graduate may choose to graduate in absentia. Students who elect to graduate 'in absentia' are not permitted to participate in any future ceremony as recipient of the same certificate or degree.

REQUEST FOR DIPLOMA

A graduate from Mapúa MCL is eligible for the issuance of a Diploma.

The diploma is issued only once. For a duplicate copy, a letter addressed to the Registrar stating the reason for the request must be submitted. A letter of authorization to request for or to claim the diploma must be presented if the applicant is not able to do so.

REQUEST FOR TRANSCRIPT OF RECORDS

Any student may request for an official Transcript of Records at the Registrar's Office.

The Transcript of Records shall be issued only to the student or to his authorized representative and/or the college or university where the student transferred. Please note that an Official Request Form from the college or university is required together with the Return Slip of The Transfer Credentials prior to the release of the Transcript of Records.

The following are required prior to the release of the transcript of records:

1. Duly accomplished Request for Transcript of Records;
2. Official Receipt of payment of Transcript Fee issued by the Treasurer's Office.

REQUIREMENTS FOR CHED CERTIFICATION, AUTHENTICATION, AND VERIFICATION (FOR BACCALAUREATE PROGRAMS)

A student requesting for CHED Certification, Authentication, and Verification (CAV) must submit the following documents to the Registrar's Office:

1. Duly accomplished Request for Various Documents
2. A clear duplicate copy of the Official Transcript of Records
3. A clear duplicate copy of the Diploma
4. A Certification of Enrollment (for undergraduates only)
5. A letter of authorization to transact and/or to claim (if the student is not available)
6. Official Receipt of payment of CAV from of the Treasurer's Office



REQUIREMENTS FOR DIPLOMA/TRANSCRIPT OF RECORDS AUTHENTICATION (LOCAL)

A student requesting for Certification of Diploma/Transcript of Records for local use must submit the following documents to the Registrar's Office:

1. A clear duplicate copy of the Diploma and /or Transcript of Records.
2. A letter of authorization to transact and/or to claim (if the student is not available)
3. Official Receipt of payment of Diploma/TOR Certification from of the Treasurer's Office

MAILING OF TRANSCRIPT OF RECORDS TO OTHER ENTITIES OTHER THAN THE STUDENT ABROAD

A student may request for the Official Transcript of Records of a student of Mapúa MCL and release the document either through facsimile, electronic mail or

postal mail services. The student must follow the requirements for Request for Transcript of Records with a letter containing the details of the addressee (Contact Person and Designation, Name of Organization, Complete Address).

The Official Transcript of Records shall be sent to the addressee within twenty one (21) working days from receipt of request and payment of transcript and mailing fees.

The Certification shall be available for release one (1) week from the time of submission of complete documents.

TRANSFER CREDENTIALS (HONORABLE DISMISSAL)

All inactive students/graduates who shall transfer to another Higher Educational Institution should apply for her Transfer Credentials (Honorable Dismissal).

The student must submit the following documents to the Registrar's Office:

1. Duly accomplished Request for Transfer Credentials
2. Official Receipt of payment of Transfer Credentials Fee from the Treasurer's Office

Upon request for the transfer credentials, a student may also apply for the following'

1. Certified True Copy of Grades
2. Certification of Course Description
3. Certified Copy of F-137a and/or F-138
4. Certificate of Attendance/Number of Units Earned



CERTIFICATIONS

Other academic record-related certifications may be issued upon request of the student from the Registrar's Office.

AWARDS AND HONORS FOR BACCALAUREATE PROGRAMS

Graduating students in each baccalaureate program are entitled to Latin Honors. The Latin Honors are awarded to members of the graduating class who have satisfied the following requirements:

- a. Must have completed a minimum of 80% of the required academic units for a degree in Mapúa MCL.
- b. Must have finished the program within the length of time prescribed by his curriculum or program of study.
- c. Must not have obtained any grade of "5.00", "FA", or "F" in all courses prescribed in his curriculum or program of study.
- d. The credit grade average shall be based on grades in the student's program only and only resident units will be considered. This includes courses that are qualified as electives as well as courses that were officially filed as equivalent courses. Courses filed for credit only will not be included in the computation.
- e. Must be of good moral character and must not have a record of any disciplinary action meted out to him during his stay in Mapúa MCL.

Latin honor	GWA
Summa cum laude	$1.00 \leq GWA \leq 1.25$
Magna cum laude	$1.25 < GWA \leq 1.50$
Cum laude	$1.50 < GWA \leq 1.75$

JOSE RIZAL AWARD FOR EXCELLENCE AND VIRTUE IN COMMUNITY SERVICE

Center for Service-Learning and Community Engagement's (CSCE) mission is to provide integrated learning opportunities for Mapúa MCL students through community service to foster civic responsibility toward the pursuit of academic excellence. CSCE's mission can be supported by giving the Jose Rizal Award for Excellence and Virtue in Community Service (JRAEVCS) to the student during the commencement exercises of the academic institution. It is an institutional award granted by the Mapúa MCL to deserving students who exemplify civic responsibility through excellence, and virtue in extending voluntary services for community organizing and development.



The following are the qualifications for eligibility:

- Graduating Mapúa MCL students;
- Must have led or currently in a program, project, advocacy campaign related to community organizing and development;
- Must have good academic standing (GWA 2.50 or better); and
- Must have no derogatory records against standard ethical practices and procedures set by the academic institution and mandatory laws or policies set by the local government.

TUITION FEES AND OTHER CHARGES

GENERAL INFORMATION

Matriculation fees and other charges published by Mapúa MCL are approved by the Commission on Higher Education. Itemized fees are posted on bulletin boards, and any notice of fee increases is announced in advance.

Mapúa MCL offers convenient payment schemes that allows payment options in full or installment. Regardless of whether a student completes their studies during a given term or not, all such fees must be paid in full and is non-refundable, except in specified cases under Section 100 of the 2008 Manual of Regulations for Private Schools (MORPHE).

A 1% penalty shall be charged on any outstanding balance for every month of delay.

The use of laboratory facilities, instruments, or materials does not require any deposit fees, but students are responsible for any loss or damage caused by unreasonable wear and tear and will be required to replace or pay for them.

REFUND OF FEES

Refund of fees shall be governed in accordance with Section 100 of the 2008 MORPHE to wit:

“Unless otherwise provided by institutional policies, rules and regulations, a student who transfer or withdraws, in writing, within two (2) weeks after the beginning of classes, and who has already paid the pertinent tuition and other school fees in full or for any length longer than one month, may be charged twenty-five percent (25%) of the total amount due for the school term if he withdraws within the first week of classes, or fifty percent (50%) if within the second week of classes, regardless of whether or not he has actually attended classes. The student may be charged for all the school fees in full if he withdraws any time after the second week of classes.”



Student Services

Student Affairs Office

The Student Affairs Office (SAO) serves as a conduit between the students and the various student services of Mapúa MCL.

The SAO shall be the vanguard of student rights and at the same time the enforcer of student discipline. Its objectives are as follows:

- To support the vision and mission of Mapúa MCL by providing high quality services to students;*
- To enhance and deepen the students' commitment to positive values by inculcating in them a strong sense of honesty, compassion, personal responsibility and respect for others;*
- To actively partner with the faculty members in conducting student enrichment activities; and*
- To use all resources available in providing comprehensive programs and services integral to the educational process.*

The following are the responsibilities of the SAO:

- Help create a campus environment that is conducive to the learning process;*
- Identify, monitor and act upon the specific needs of students through its programs and projects*
- Provide an atmosphere for a wholesome student life and development;*
- Safeguard the welfare of students;*
- Establish and maintain a productive communication among students, faculty members, personnel and the administration; and*
- Inform students about Mapúa MCL's vision and mission, its core values, and relevant policies and procedures.*

Centers under the SAO are the following:

- Center for Student Activities and Discipline (CSAD)*
- Center for Guidance and Counseling (CGC)*
- Center for Scholarships and Financial Assistance (CSFA)*
- Center for Student Advising (CSA)*

Center for Student Activities and Discipline

The Center for Student Activities and Discipline (CSAD) promotes student empowerment by encouraging and supporting activities that cater to the diverse needs and interests of students/student organizations and breed a sense of social responsibility, spirited citizenship, leadership skills, creativity and true self-expression among the studentry.

CSAD is also responsible for monitoring the discipline of all students and for handling student related complaints, cases and investigations.

Functions and responsibilities of CSAD:

On Student Activities:

- Facilitates the establishment and development of student organizations through a rationalized system of recognition and accreditation.
- Organizes various activities for students/student organizations in coordination with the other centers;
- Supervises, regulates, and facilitates the co-curricular and non-curricular activities of accredited/recognized student organizations and student councils; and
- Ensures access to auxiliary facilities as meeting places for recognized student organizations, and student lounges where they can interact and socialize.

On Student Discipline:

- Informs students of their rights and responsibilities;
- Appraises students of the rules/codes on student discipline, and proper decorum and behavior in their association with fellow students, teaching and non-teaching employees, and administrative and academic officers;
- Informs students of the proper decorum inside the campus;
- Orients students of the Mapúa MCL dress code and the No ID, No Entry Policy.
- Monitors student infractions and implement their penalties; and
- Executes procedures on student discipline, and monitors progress and compliance of students with sanctions.

The Center for Guidance and Counseling (CGC) aims to assist and guide students in the process of self-evaluation, maintaining a balanced and healthy personality, achieving academic efficiency and enhancing fundamental life skills needed to be well adjusted and highly functional persons.



Center for Guidance and Counseling

The Center for Guidance and Counseling (CGC) aims to assist and guide students in the process of self-evaluation, maintaining a balanced and healthy personality, achieving academic efficiency and enhancing fundamental life skills needed to be well adjusted and highly functional persons.

CGC offers the following Guidance Services and Mental Health Support:

- **COUNSELING** – In keeping with the development in the profession, the term, “counseling”, to the layman, is considered synonymous to, and interchangeable with, guidance and counseling, but to professional counselors, it is a face-to-face helping relationship. It is a mission of service (Sec. 3 R.A. 9258). CGC offers Online and Onsite Counseling for students and employees that provide therapeutic intervention to address mental health issues. Online counseling is done through video conferences, online calls, chats and e-mails.
- **CONSULTATION** – May occur when significant others such as parents, faculty, administrators and community would request for CGC personnel's expertise in responding to the needs of the students. Consultation or online consultation maybe in a form of personal advising, giving talks, seminars/ workshops, webinars and acting as a resource person.
- **GUIDANCE AND COUNSELING INFORMATION** – Activities where descriptive materials are organized and disseminated to the students through individual counseling, planned group activities, online and offline platforms to help the students make informed and appropriate decisions with their academic, personal/social and career life. Mental Health Awareness will be part of the guidance and counseling information.
- **ASSESSMENT AND EVALUATION** – Assessment refers to the administration, scoring and interpretation of standardized psychological tests to determine objectively the specific characteristics of individuals while evaluation according to Villar (2014) is done to discover whether guidance programs, services or activities attain the goals for which they were implemented.
- **MENTAL HEALTH PROGRAM** – In keeping with RA 11036 or the Mental Health Act, CGC highlights in all its services and activities the mental health and psychosocial support to Mapúa MCL students and supports mental health programs for faculty and non-teaching personnel. consultation maybe in a form of personal advising, giving talks, seminars/ workshops, webinars and acting as a resource person.



Center for Scholarships and Financial Assistance

The Center for Scholarships and Financial Assistance (CSFA) ensures that scholarships, academic grants, financial aids, and all other services offered by the Center are made available to deserving and needy students.

Functions and responsibilities of CSFA:

- Administers the scholarship and financial assistance programs for students; and
- Coordinates Third Party Scholarship Grants, i.e., scholarships offered by companies, associations, private individuals, government, and other non- Mapúa MCL entities for the financially challenged yet academically deserving students of Mapúa MCL.

SCHOLARSHIPS

Scholarship and financial aid are awarded to eligible students to attract and retain academically talented students and to increase accessibility to Mapúa MCL education through discounts and grants. Scholarship and financial aids awarded to eligible students are classified as follows:

- a. Scholarship – discount on fees or financial support based on student academic achievement or other specified meritorious criteria.
- b. Grant – financial support based on defined criteria by donors and benefactors.
- c. Prize – discounts on fees awarded to winners of Mapúa MCL sponsored competition.
- d. Institutional Aids – discounts on fees or financial support based on defined criteria by Mapúa MCL. This includes aid for Mapúa MCL, YGC, and Ayala Corporation employees and employees' dependents as defined by policy. It also includes assistance based on the financial needs of students who are siblings.

Eligibility applies to students enrolled full-time in degree-granting programs unless otherwise specified in the criteria.

Students eligible for multiple Mapúa MCL-sponsored scholarships or aids will be awarded the one of highest value unless otherwise noted. Should a student be eligible for the Mapúa MCL-sponsored ones but has been granted non- Mapúa MCL sponsored scholarships, the latter shall be applied first.

Awarding of scholarships and financial aid are granted only upon presentation of all the required documents duly approved by the authorities concerned. It may be discontinued in accordance with specific rules set for disqualification for each of the scholarships.

The list of scholarships offerings is regularly updated at www.mmcl.edu.ph, the Official Mapúa MCL Website.

Center for Student Advising

The Center for Student Advising (CSA) of the Student Affairs Office (SAO) ensures the provision of an integrated advising experience for all students in the Mapúa MCL learning environment. It works collaboratively with academic and non-academic departments in providing students with relevant information to successfully cope with the transitional and developmental experiences, and in creating an enabling environment for academic success and satisfaction.

CSA is tasked with the implementation of Integrated Advising for Student-Centered Enrichment and Development (I-ASCEND) program which helps students develop and attain their goals (i.e. personal, academic and career) in line with the program educational objectives and student outcomes.

The following are the functions and responsibilities of CSA:

- To provide general advising services in furtherance of students' knowledge and understanding of themselves in relation to Mapúa MCL core values, administrative system, academic processes, and quality standards;
- To monitor, review, and evaluate the implementation of I-ASCEND program from course to institutional level; and
- To coordinate the advising and mentoring of identified student groups, particularly those under the Mapua MCL sports and athletics program.

40

Center for Learning and Information Resources

The Mapúa MCL Center for Learning and Information Resources (CLIR) exists in support of the teaching, research, and extension functions of Mapúa MCL. It serves the academic community's needs, specifically students and faculty members, through equitable access to high-quality information resources and services.

Guided by the goals and objectives of Mapúa MCL, CLIR affirms itself to be the resource center of excellence in information, especially in the field of technology through the following objectives:

Procure, organize, and provide a well-balanced collection to complement the academic programs of Mapúa MCL:

- Provide and maintain appropriate facilities and equipment that shall enable users to fully utilize the center's resources;
- Produce skilled researchers by providing timely and instant access to various formats of information in any part of the country and of the world;
- Create an environment that encourages learning through quality services; and,
- Develop an efficient staff that shall guide students and other researchers in their quest for learning.

The center is open to all Mapúa MCL students, academic and administrative officers, teaching and non-teaching employees, and outside researchers with referral letters from their respective colleges/universities.

Related information on CLIR services and facilities, and policies and regulations can be found at CLIR Website (<https://clir.mcl.edu.ph/>).

Center for Health Services and Wellness

In accordance with the present policy of the government requiring a yearly medical examination of all students enrolled in all private schools, colleges, and universities, continuing students shall undergo annual medical examination supervised by the Mapúa MCL Center for Health Services and Wellness (CHSW) for that purpose.

41

The services of physicians together with a staff of nurses have been engaged by Mapúa MCL to take charge of the protection health maintenance of the Mapúa MCL population especially the students.

Functions and Responsibilities:

- Administers physical examination of incoming freshmen which includes Chest X-ray, Urinalysis, Blood Test, and Dental check-up;
- Provides first aid treatment of walk-in patients with wounds, fever, headaches, sore eyes, colds, cough, diarrhea, asthma, sprain, and other minor illnesses;
- Refers cases requiring medical specialist/s for further evaluation and management;
- Provides emergency care in case of serious illness or injury;
- Maintains medical health records:

Registrar's Office

The Registrar's Office serves as the central repository of all student permanent records. The office is also in-charge with the reproduction of pertinent and relevant documents

related to curriculum and course descriptions, authentication of student related documents, and the issuance of the diploma and transcript of records of students.

Learning Environments and Innovations Office

Primarily tasked with ensuring the promotion and advancement of the learner-centered approach and outcomes-based education (OBE) in the Mapúa MCL learning environment, the Learning Environments and Innovations Office (LEIO) has been created for the following functions:

1. To aid in the development of physical and virtual environments conducive to learning
2. To support sound educational practices that contribute to the achievement of learner-centered, outcomes-based education; and
3. To promote the use of appropriate technology in the teaching-learning processes.

Extension Services

Center for Service-Learning and Community Engagement

Center for Service-Learning and Community Engagement (CSCE) administers the social responsibility programs of Mapúa MCL. In its mission, Mapúa MCL commits to help solve industry's and society's problems by the expert application of existing knowledge as it strives for its vision of being 'a global steeple of excellence in professional education and research'. This commitment of Mapúa MCL is geared to extending its mission not only to the academic community but also to the entire Filipino nation through community service and corporate citizenship that is aligned to help promote the welfare of the Filipino people in these fast-changing times.

Mapúa MCL (Mapúa MCL) espouses the principle of Excellence and Virtue through pursuing relevant integrated Service-Learning opportunities and significant community engagement and services aligned with Mapúa MCL's mission of helping solve industrial and social problems by the expert application of existing knowledge with its desired student outcomes.

Core Advocacies of CSCE:

- **Social Responsibility** - CSCE encourages initiatives that would inculcate a sense of shared responsibility and nurture the consciousness of Mapúa MCL students and related stakeholders to actively participate in addressing the current and emerging needs of the society. The department aims to promote social responsibility by supporting initiatives that would allow proponents and participants to act for the benefit of the society as a whole.
- **Sustainable Development** - CSCE advocates environmental, social, and economic initiatives that would inculcate a sense of sustainability to Mapúa MCL students and all other active participants. The department aims to promote sustainable development by building and supporting mechanisms that would enable learners and stakeholders to appreciate the value of meeting current needs without compromising future generations.
- **Lifelong Learning** - acknowledging that learning is a continuous process, CSCE promotes initiatives that aim to further enhance the knowledge, skills, and competencies of the members of the Mapúa MCL academic community as well as its community partners and other relevant stakeholders.

Core Functions and Responsibilities of the CSCE:

1. Support and encourage the Mapúa MCL community in its active involvement by fostering civic responsibility through integrated Service-Learning opportunities and rendering relevant community engagement and services.
2. Uphold efficient and effective implementation of student-centered initiatives, programs, projects, consultations, and advocacies toward non-profit Service-Learning opportunities and community engagement.
3. Exercise collaborative decision-making in all community engagement activities proposed by the different service drivers from Mapúa MCL colleges, offices, and student organizations.
4. Spearhead Service-Learning and community engagements in the conduct of classroom-oriented, college or program-oriented and institutional projects, programs, consultations, and advocacies.
5. Accept donations or endowment of any kind that can be used to support related Service-Learning and community engagements.
6. Seek partnerships with government, non-government, and other private organizations or individuals to provide Service-Learning and community engagements
7. Ensure Mapúa MCL's adherence to the government's mandate of the National Service Training Program (NSTP) Act of 2001 otherwise known as Republic Act No. 9163 and therefore shall follow the implementing Rules and Regulations issued by the Commission on Higher Education (CHED).

Other CSCE Functions:

1. Utilize the existing knowledge of the different organizations in the academe in order to bring service to the stakeholders of communities.
2. Organize and conduct services that promote social awareness into actions of positive development for students, faculty members, employees, and external linkages.
3. Manage the Center of the National Service Training Program as one of its programs that ensures all activities, services, and engagements are aligned with Mapúa MCL's values and advocacies.



Social and Ethical Responsibility for Values Embodiment (SERVE)

CSCE is also responsible for implementing Mapúa MCL's Social and Ethical Responsibility for Values Embodiment (SERVE) Program to initiate, promote, and implement Mapúa MCL values education, formation, and development drive for the entire Mapúa MCL community. This is aligned with the virtue component of the Mapúa MCL motto.

In relation to SERVE, CSCE is mainly tasked to:

1. Manage all Values Education (VE) course offerings for the students every term including but not limited to organization of courses, enlistment and registration procedures.
2. Maintain proper information dissemination system for all students regarding all VE activities, projects, and requirements;
3. Recruit and organize a cluster of facilitators who will handle VE courses and VE-related initiatives for students and employees.

National Service Training Program (NSTP)

The CSCE is also tasked with implementing National Service Training Program in compliance with the provisions of Republic Act 9163, otherwise known as the NSTP Law of 2001. As such, it has an NSTP unit that functions to service all NSTP courses being taken by the students of different colleges. The unit is under the supervision and control of the CSCE to ensure that NSTP civic engagements are aligned with Mapúa MCL's social responsibility program.

Functions and Responsibilities:

1. Manage all NSTP course offerings for the students every term including but not limited to organization of courses, enlistment and registration procedures;
2. Maintain proper information dissemination system for all students regarding all NSTP Activities, projects, and requirements;

3. Recruit and organize a cluster of NSTP facilitators who will handle NSTP courses and community service initiatives;
4. Organize and conduct activities that will promote socio-civic awareness and social concern among students;
5. Ensure that NSTP courses provide an exposure for the students to gain knowledge of the needs of communities so in the long run students may develop this social concern and passion to help other through sharing their acquired knowledge;
6. Coordinate with the different Colleges and Departments on activities and matters pertinent to NSTP.
7. Report to the Commission on Higher Education (CHED), school authorities, and other administrative bodies on the conduct of NSTP activities, and the progress of the students under the training program.

Administrative Services

Office for Human Resources and Administrative Services

The administrative services unit of the Office for Human Resources and Administrative Services (OHRAS) is responsible for implementing Mapúa MCL's administrative policies, strategies, programs, and procedures.

Functions and Responsibilities:

1. Provides students, faculty members, and employees with the necessary facilities and equipment that shall enable them to effectively discharge their duties and responsibilities
2. Implements rules and procedures defining tasks and activities for the CDMO, Security Department and Janitorial Services;
3. Keeps track on records keeping regarding inventory, maintenance, and repair of Mapúa MCL equipment/furniture, infrastructure projects, and housekeeping services in coordination with the CDMO;
4. Interacts with unit heads and staff of various departments to provide support for each department's requirement concerning logistics, room reservations, equipment / furniture transfer, and other matters concerning operations;

5. Implements and controls the efficient and effective flow of dispatching Mapúa MCL Company Service Vehicles between the point of origin and destination and vice versa, in order to meet each department's needs;
6. Coordinates with the CDMO in overseeing the safe and secure operation and maintenance of all Mapúa MCL assets in a cost-effective manner aimed at long-term preservation of the asset value;
7. Supervises the Security Department in providing physical security for Mapúa MCL officers, employees, staff, students, visitors, personnel, buildings, property, and installations; and
8. Supervises the Janitorial Services for the cleanliness and overall housekeeping of buildings and grounds;

Data Protection Office

The Data Protection Office (DPO) ensures Mapúa MCL's compliance as Personal Information Controller with the Data Privacy Act of 2012, its Implementing Rules and Regulation (IRR), issuances by the National Privacy Commission (NPC), and other applicable laws and regulations relating to data privacy and data protection.

Office for Planning and Quality Management

To uphold Mapúa MCL's Policy and support its mission and vision, the Office for Quality Management (OQM) ensures that necessary processes that comprise Mapúa MCL's Educational Organizations Management System (EOMS) are adequately defined, effectively implemented, and continually improved.

Functions and Responsibilities:

1. Coordinate efforts and lead concerned colleges, institutes, and support departments in the acquisition of program certifications, recognitions, and accreditations both locally and internationally;
2. Conduct regular internal audits of the Mapúa MCL EOMS to maintain its processes' compliance with relevant standards;
3. Conduct assessment activities that produce data which help the Mapúa MCL Administration make informed decisions; and
4. Assist Mapúa MCL Administration in the performance evaluation of its personnel through monitoring of the effectiveness of preventive and corrective actions taken in curbing relevant audit findings.



Corporate Communications Office

The Corporate Communications Office (CCO) is responsible for handling the creation of materials for Mapúa MCL's internal and external communications. CCO also handles the official documentation of school events and activities.

Functions and Responsibilities:

1. Conceptualizes and designs creative materials for the release of information to internal and external audiences;
2. Handles the documentation of school events and activities;
3. Provides creative communications support to the various departments and colleges.

Office for Strategic Partnerships and Global Engagements

The Office for Strategic Partnerships and Global Engagement (OSPGE) is the gateway to all linkages and collaboration programs of Mapúa MCL. It is under the Office for External Relations and Global Linkages and Office of the Executive Vice-President and Chief Operating Officer. OSPGE takes the lead in forging partnerships and linkages with industry leaders, academic institutions that share the same vision and value for collaboration and mutual cooperation, government agencies and instrumentalities, non-government organizations, and private groups.

Essentially, the OSPGE is a support unit for the different colleges and departments that need to have external programs and linkages as part and parcel of the institution's

advocacy for outcomes-based education (OBE) and 21st century teaching and learning.

Specifically, the following are the services offered by the Office:

1. Facilitation of institutional agreements between Mapúa MCL and partners for student internships, career development programs, faculty immersion activities, collaborative community service, and service-learning;
2. Active role and leadership in negotiating for scholarship programs and grants from external agencies;
3. Management of Mapúa MCL's internationalization programs in support of the academic units;

48

4. Supervision of the Alumni Center in support of Mapúa MCL's outcomes-based framework and value chain, and in keeping a strategic partnership with the graduates for possible collaboration;
5. Monitoring, assessment, and evaluation of current and expiring partnerships to ensure that commitments are faithfully fulfilled and complied with.

Office For Risk Management And Business Continuity

The Office for Risk Management and Business Continuity (ORMBC) is the institutionalized administrative center whose main thrust is to implement policies and strategies aimed at strengthening the ability of Mapúa MCL to respond and recover from an emergency or disaster.

Instructional Facilities Office

The Instructional Facilities Office (IFO) is the institutionalized administrative center for all instructional facilities (specifically, lecture, and laboratory rooms) in Mapúa MCL. The office has the following objectives:

1. To ensure that all instructional facilities, in collaboration with other administrative departments, are properly managed and utilized in the implementation of the program curricula offered by Mapúa MCL.
2. To develop, manage, and implement policies and procedures that will strengthen the systematic support operations for effective and efficient management of the instructional facilities and their corresponding resources in Mapúa MCL.
3. To provide safety and security policies that will protect and minimize, if not totally eradicate, the potential health hazards and accidents that laboratory users encounter.
4. To guarantee that laboratory classes are suitably provided with qualified support personnel, equipment and resources as required by and agreed with the concerned department in the fulfillment of the program curricula.

49

Security Service

The Security Office is entrusted with the responsibility of keeping peace and protecting persons and property within the College, thus:

- Spot and random verification of ID shall be regularly done by Mapúa MCL security officers.
- Doers of wrongful acts causing physical injuries, damage to property, vandalism, theft, and other criminal acts within the Mapúa MCL compound shall be apprehended and brought to the Center for Student Activities and Discipline (CSAD) for investigation and proper action.
- Violation of other misdemeanors by the student shall also be reported by the apprehending officers to the Prefect and the department where the student belongs.
- Bags, bundles, knapsacks, etc. of students entering the Mapúa MCL premises shall be inspected by Mapúa MCL security officers in order to prevent entry of prohibited or dangerous materials within the premises.
- Any unauthorized person, intruder, or outsider found or apprehended within the premises must be duly identified; his name recorded in the Mapúa MCL Security Service Logbook, and brought directly to the nearest police precinct for investigation and proper action.
- Severe disciplinary measures and legal action, if proper, shall be brought against any person or persons participating or involved in hazing.
- Strict prohibitions are enforced against the carrying of firearms or other weapons within the campus. The weapons will be confiscated and may be turned over to the police.

Blue and Silver Bookshop

The Blue and Silver Bookshop is the books and school supplies store of Mapúa MCL. It is located at the ground floor of E.T. Yuchengco Building.

The store's operating hours are:

- Monday-Friday from 6:30 am until 5:00 pm
- Saturday from 6:30 am until 4:00 pm

50

The Bookstore offers the following services:

- School and office supplies, uniforms, and other apparels; textbooks and manuals
- Photocopying services; printing; scanning; ring binding; bookbinding

Food Services (Cafeteria)

Located at the ground floor of the E.T. Yuchengco Building, the Mapúa MCL cafeteria is open from 6:00 AM to 5:00 PM and serves breakfast, lunch, early dinner, and snacks.

Campus Development and Maintenance Office

The Campus Development and Maintenance Office (CDMO) carry out the following functions:

- Maintains a campus environment that is conducive to learning through a regular upkeep of buildings and grounds and all facilities and equipment therein.
- Provides students, faculty members, and employees with the necessary facilities and equipment that shall enable them to effectively discharge their duties and responsibilities.
- Implements corrective measures for the improvement of student and personnel services.
- Maintains a clean and safe environment through sanitation and waste management.

Information Technology Services Office

- Radio Frequency (RF) Identification System; Each student is given a Smartcard ID (Mapúa MCL Identification Card) with unique security features based on radio frequencies or contact-less SMART card technology. The Mapúa MCL ID shall serve as the student's primary badge for access to the main entrance and exit gate of the campus.

- Students, applicants, and other interested parties may visit the official website of Mapúa MCL for the latest news articles, announcements, and important dates to remember among other relevant and pertinent information pertaining to Mapúa MCL and all its colleges. The site's URL is www.mmcl.edu.ph.
- Microsoft 365 is a suite of productivity applications that help you stay connected and get things done. Each student is provided with a Microsoft 365 license which can be used online or installed to your personal devices (up to 5 devices). Aside from Microsoft apps like Word, Excel, PowerPoint, and Outlook, students may also take advantage of new apps such as Teams, SharePoint, OneDrive, Yammer, etc.
- Wi-Fi Access Anytime and Anywhere; Anywhere in the campus, be it in the cafeteria, student lounges, the Center for Learning and Information Resources, Auditorium, the gardens, or at the Track Oval, student can access the Internet using their personal laptop computers and other devices.

STUDENT RULES AND REGULATIONS

Overview

For Mapúa MCL to achieve its educational goals, it is imperative that its entire academic community is committed not only to the fundamental principles that govern the provision of a safe, supportive, and effective learning environment, but also to the development of moral character expected of enlightened members of its community.

The authority of Mapúa MCL to instill discipline is based on the Manual of Regulations for Private Higher Education (MORPHE) which states the following:

“Every higher education institution shall maintain discipline inside its campus as well as within the immediate surroundings of the school premises.” (Article XXI, Section 102)

“Every higher education institution shall have the right to promulgate reasonable norms, rules, and regulations it may deem necessary and consistent with the provisions of this Manual (MORPHE) for the maintenance of school discipline and class attendance” (Article XXI, Section 103)

Mapúa MCL students, therefore, are expected to conduct themselves as responsible members of the academic community. Students who commit misconduct as defined by Mapúa MCL in accordance with its rules and regulation will be subject to disciplinary action, provided such conduct takes place on or outside of Mapúa MCL premises, its vicinity, during an Mapúa MCL-sponsored or Mapúa MCL-supervised activity, or on online platforms.

Hence, conduct may be subject to necessary disciplinary action by Mapúa MCL if that conduct:

1. Seriously violated school policies, rules, and regulations;
2. Is grossly immoral and would negatively reflect upon the student’s character and fitness as a member of the student body;
3. Constitutes a serious violation of local and national laws; and
4. Besmirches the good name or reputation of Mapúa MCL.

Compliance with rules and regulations is not the sole responsibility of the student but



also of the parents. Hence, the refusal of parents to follow the rules and regulations of Mapúa MCL may be a legal ground for denying a student's readmission.

All students are enjoined to abide by and observe the rules and regulations herein set forth. They are urged to refrain from committing any offense which is detrimental to the good of the students and the whole academic community in general.

The set of rules and regulations herein applies to all current Mapúa MCL college students regardless of year of entry to Mapúa MCL.

Rights and Responsibilities in the Class

A. Freedom of Expression

Each faculty member has the responsibility to provide a learning atmosphere that is conducive to freedom of expression by encouraging discussion and permitting exception to the views he/she has presented. Moreover, it is the responsibility of the faculty member to guide and direct such discussion and inquiry in a scholarly manner and it is in his/her authority to determine the scope and duration of discussion for the purpose of attaining learning outcomes.

Students have the right of expression in the classroom and the responsibility to learn from the course of study based on the standards of performance established by the faculty. Student behavior and performance in the classroom should contribute to the learning process.

B. Instructional, Assessment, and Grading Procedures

The faculty determines the character of the courses which includes content, instructional, assessment, and grading procedures. Students should be informed of these matters during the course orientation meeting.

Each student has the right to a course grade based upon an objective basis of assessment and evaluation of his/her performance and the specified grading procedure. A student has the right to ask for clarification of the basis for his/ her grade.

C. Faculty-Student Consultation

Faculty members should make themselves available on a regular basis for consultation with students. Students may request to discuss their class standing during the progress of the course. If a student conveys information of a confidential nature to a member of the faculty, his/her confidence should be respected.

54

Mapúa MCL Students Code of Conduct and Discipline Rationale

The right of Mapúa MCL to impose sanctions against improper student conduct is derived from, and is inherent in its primary obligation to:

- a. Exemplify moral values, ethics, and ideals;
- b. Protect its property and the property of the members of the community;
- c. Protect the health of persons in the academic community and ensure their safety;
- d. Preserve peace and ensure orderly procedures;
- e. Protect its good name as an educational institution;
- f. Respect human rights;
- g. Maintain and strengthen student morale

The students of Mapúa MCL shall always abide by all the laws of the land, all memoranda issued by the Commission on Higher Education (CHED) and all rules and regulations of Mapúa MCL.

The Prefect of Discipline

The Prefect of Discipline (POD) is a concurrent position of the Head of the Center for Student Activities and Discipline. As such, he is the chief student discipline officer of Mapúa MCL and thus, has authority over disciplinary cases. His authority to implement disciplinary measures depends on the gravity and complexity of the case.

Key Functions and Responsibilities:

1. The POD has the authority to decide and impose sanctions on minor offenses. He has the same authority with respect to major offenses where the corresponding sanction is probation.
2. The POD shall secure the prior written approval of the OVPAA as endorsed by the Student Affairs Director for the disposition of cases involving major offenses where the corresponding sanction is suspension of one (1) term.
3. The POD shall convene a Committee on Decorum (COD) for cases involving major offenses where the corresponding sanction is heavier than probation as defined in the Mapúa MCL Student Rules and Regulations. The COD shall then have authority to handle cases involving major offenses as defined in this Student Rules and Regulations.

The COD is ideally composed of, but not limited to, the following:

- a. Prefect of Discipline
- b. Student Affairs Director
- c. Legal Counsel
- d. Faculty Member
- e. Non-teaching Employee
- f. Student Council Officer or student leader

Type of Disciplinary Actions

Acts of misconduct are meted with any or combination of the following disciplinary actions:

REF NO.	Disciplinary Action (DA)	
1.	Notice of Warning	
	1.a	Verbal notice of warning
	1.b	Written notice of warning
2.	Disciplinary Sanctions	
	2.a	Probation – written reprimand with probationary discipline status. An erring student must not commit the same misconduct again for a designated period of time.
	2.b	Suspension – separation of the student from MCL for a definite period of time. After serving the suspension, he is eligible to return. Conditions for return may be specified.
	2.b.0	• <i>Suspension for less than one term</i>
	2.b.1	• <i>Suspension for one term</i>
	2.b.2	• <i>Suspension for two or more terms</i>
	2.c	Dismissal – immediate exclusion or dropping of the name of the erring student from the roll of students upon promulgation of sanction.
	2.d	Expulsion – as defined in MORPHE
3.	Academic Sanctions (for academic offenses only)	
	3.a	Zero on the Graded Activity
	3.b	Failure in the course
4.	Supplemental Sanctions – any of community service, academic integrity seminar, service-learning, CSAD engagements, restitution, etc.	

Erring students meted with Disciplinary Sanctions shall be referred by the Prefect to the Center for Guidance and Counseling (CGC) for proper counseling needed for them to understand the implications of their errant behavior.

Type of Misconduct

1. **Major Offenses** – gross misconduct or grave immorality that initially require at least a Disciplinary Sanction.

2. **Minor Offenses** – errant behaviors that initially require at most a Notice of Warning.

Table of Offenses and Corresponding Disciplinary Actions

Major Offense		Occurrence and Disciplinary Actions			
		1 st	2 nd	3 rd	4 th
1.	Academic Dishonesty Offenses such as but not limited to the following:				
1.1	Any form of cheating in assessment activities or graded course works whether in-class or off-class for the purpose of improving one’s academic standing.	Probation; Zero on the graded activity or failure in the course; supplemental sanction	Suspension for one term; failure in the course; supplemental sanction	Suspension for two or more terms; failure in the course; supplemental sanction	Dismissal
1.2	Student Co-Responsibility through unauthorized assisting or receiving assistance in assessment activities or graded course works.				
1.3	Plagiarism or the act of presenting ideas, words, or organization of a source material as one’s own.				
1.4	Misuse or actual or attempted falsification, theft, misrepresentation, or alteration of any official academic record of Mapúa MCL.	Suspension for one term; failure in the course; supplemental sanction	Suspension for two or more terms; failure in the course; supplemental sanction	Dismissal	
2.	Offenses Related to Person(s) in the Mapúa MCL Academic Community such as but not limited to:				
2.1	Threatens to physically assault/ injure or actual physical assault/ injury committed against any member or visitors of the Mapúa MCL academic community.	Suspension for two or more terms or Dismissal or expulsion; supplemental sanction	Dismissal or expulsion		

2.2	Defamation, abusive behavior, or gross discourtesy committed against any member of the Mapúa MCL academic community or his authorized representative.	Probation; supplemental sanction	Suspension for one term; supplemental sanction	Suspension for two or more terms; supplemental sanction	Dismissal
2.3	Hazing or the infliction of any physical or mental harm or ordeal, which act injures, degrades, or disgraces or that tends to injure, degrade, or disgrace any fellow student or member of the Mapúa MCL academic community.	Dismissal or expulsion			
2.4	Engaging in lewd, obscene, or immoral conduct within Mapúa MCL premises and its vicinity.	Dismissal			
2.5	Public display of intimacy which offends the sensibilities of the academic community, and which may be deemed or perceived as vulgar or repulsive.	Suspension for less than one term;	Suspension for one term; supplemental sanction	Suspension for two or more terms; supplemental sanction	Dismissal
2.6	<p>Online Decorum as an Mapúa MCL Community Member, such as but not limited to:</p> <ul style="list-style-type: none"> · Online profanity, vulgarity, and indecency. · Online defamation, threatening, or bullying whether against members or non-members of the MCL community. · Online dissemination of false information on matters related to the MCL community. 	Disciplinary Probation with community service.	Suspension for at least one term, with community service.	Suspension for at least two terms, with community service.	Suspension for at least three terms with community service or dismissal from Mapúa MCL.
3.	Offenses Related to Property such as but not limited to:				
3.1	Stealing or attempting to steal; knowingly and without consent or authorization has in his or her possession or control an Mapúa MCL property or that of its members.	Suspension for less than one term or for one term; supplemental sanction	Suspension for two or more terms or dismissal; supplemental sanction	Dismissal	

3.2	Intentionally or negligently damages, destroys, defaces, or vandalizes property owned or in the possession of another person in Mapúa MCL.	Probation or Suspension for less than one term; supplemental sanction	Suspension for one term; supplemental sanction	Suspension for two or more terms; supplemental sanction	Dismissal
3.3	Forcible entry into Mapúa MCL				
3.4	Unauthorized use of Mapúa MCL property and facilities.				
3.5	Embezzlement of funds of a student organization and/or student council.	Suspension for two or more terms; supplemental sanction	Dismissal		
4.	Offenses Related to Mapúa MCL Operations such as but not limited to:				
4.1	Lending or borrowing of the official Mapúa MCL ID, Official Receipt, Certificate of Matriculation, or other official documents and presenting another person's documents as one's own;	Suspension for less than one term; supplemental sanction	Suspension for one term; supplemental sanction	Suspension for two or more terms; supplemental sanction	Dismissal
4.2	Tampering of the official ID and using it to enter Mapúa MCL				
4.3	Falsification, alteration or misuse of school documents, records, or credentials; knowingly furnishing false or fraudulent information and/or documents to Mapúa MCL in connection with official matters.	Suspension for two or more terms; supplemental sanction	Dismissal or expulsion		
4.4	Making, publishing, or circulating false information about the administration, its officials, employees, or students.	Suspension for one term; supplemental sanction	Suspension for two or more terms; supplemental sanction	Dismissal or expulsion	
4.5	Unauthorized collection or exaction of money, checks, or other instruments of monetary equivalent in connection with matters pertaining to Mapúa MCL.	Suspension for two or more terms; supplemental sanction	Dismissal		

4.6	Organizing, participating in and/ or supporting any activity inside the campus, without any written permit from the Center for Student Activities and Discipline.	Probation or Suspension for less than one term; supplemental sanction	Suspension for one term; supplemental sanction	Suspension for two or more terms; supplemental sanction	Dismissal
4.7	Instigating or leading an illegal strike or similar activities resulting in disruption or stoppage of classes.	Suspension for two or more terms; supplemental sanction	Dismissal		
4.8	Posting and/or distributing literature, pamphlets, pictures, news items or any announcement whatsoever without any written permit from the Center for Student Activities and Discipline.	Probation or Suspension for less than one term; supplemental sanction	Suspension for one term; supplemental sanction	Suspension for two or more terms; supplemental sanction	Dismissal
4.9	Willful failure to comply with summons or notices issued for purposes of investigation conducted in connection with discipline related offenses.				
4.10	Obstructs or interferes with the reprimand, discipline, or apprehension of another person who is involved in the commission of an offense under the Mapúa MCL Student Rules and Regulations.				
4.11	Lying under oath or presenting false documents in administrative proceedings.	Suspension for two or more terms; supplemental sanction	Dismissal or expulsion		
5.	Offenses Related to Health, Welfare, Safety and Security such as but not limited to:				
5.1	Possession, use, sale, disposal, or distribution of prohibited drugs or chemicals or other banned substances in any form, or any paraphernalia which can be demonstrated to be linked to drug activity within the premises or immediate vicinity of Mapúa MCL.	Either suspension for two or more terms and supplemental sanction or dismissal	Dismissal or expulsion		

5.2	Possession or consumption of alcoholic or intoxicating beverages within Mapúa MCL premises or, done outside Mapúa MCL premises in connection with an official school activity approved by the Center for Student Activities and Discipline; or entering the Mapúa MCL campus under the influence of alcohol.	Suspension for less than one term or for one term; supplemental sanction	Suspension for two or more terms; supplemental sanction	Dismissal	
5.3	Smoking at any time within Mapúa MCL premises and its immediate vicinity.	Suspension for less than one term; supplemental sanction	Suspension for one term; supplemental sanction	Suspension for two or more terms; supplemental sanction	Dismissal
5.4	Illegal possession or use of firearms, explosives, incendiary devices, deadly weapons, or other dangerous articles or substances injurious to person or property.	Dismissal or expulsion			
5.5	Engaging in any form of gambling within Mapúa MCL premises	Probation or Suspension for less than one term; supplemental sanction	Suspension for one term; supplemental sanction	Suspension for two or more terms; supplemental sanction	Dismissal
5.6	Engaging in disruptive actions such as protests, whether individual or collective, whose distinctive characteristics are physical force, violence, threat, and intimidation within Mapúa MCL premises and its immediate vicinity.	Dismissal or expulsion			
5.7	Forming and/or joining any surreptitious, clandestine, or illegal organization, not officially recognized by Mapúa MCL.	Dismissal or expulsion			
6.	Offenses Related to Mapúa MCL Information Technology such as but not limited to: Abuse of I.T. resources and privileges in violation of rules and regulations on the use of I.T. resources such as but not limited to:				
6.1	Lending or borrowing of user accounts;	Probation or Suspension for less than one term; supplemental sanction	Suspension for one term; supplemental sanction	Suspension for two or more terms; supplemental sanction	Dismissal
6.2	Unauthorized copying of files;				



6.3	Installation and/or use of unlicensed software (such as application software and games);	Suspension for one term; supplemental sanction	Suspension for two or more terms; supplemental sanction	Dismissal	
6.4	Alteration of computer configuration and settings;				
6.5	Unauthorized use of computer terminals and other I.T. related equipment (e.g., LCD projectors, printers, speakers);	Probation or Suspension for less than one term; supplemental sanction	Suspension for one term; supplemental sanction	Suspension for two or more terms; supplemental sanction	Dismissal
6.6	Unauthorized access to network resources and facilities;	Suspension for one term; supplemental sanction	Suspension for two or more terms; supplemental sanction	Dismissal	
6.7	Breach of network security through any means (e.g., denial of service, malicious attacks, installation of Trojans and worms, hacking);	Dismissal or expulsion			
6.8	Extraction of protected, copyrighted and/ or confidential information by any electronic means using the vast Mapúa MCL I.T. infrastructure.	Suspension for two or more terms; supplemental sanction	Dismissal		
7.	Offenses Related to Penal or Criminal Violations such as but not limited to:				
7.1	Violation of any penal statute or of rules and regulations promulgated by the Commission on Higher Education, of the policies and regulations of Mapúa MCL or of any valid order by proper authorities.	Suspension for two or more terms; supplemental sanction	Dismissal or expulsion		
7.2	Conviction before any court for a criminal offense involving moral turpitude against persons or property other than through reckless imprudence.	Dismissal or expulsion			



Minor Offenses such as but not limited to:		Occurrence and Disciplinary Actions			
		1 st	2 nd	3 rd	4 th
1	Disrupting or disturbing classes or making excessive noise within Mapúa MCL premises.	Verbal notice of warning	Written notice of warning	Probation	Dismissal
2	Not wearing the official Mapúa MCL ID while in campus; losing or forgetting one's ID				
3	Spitting, or littering;				
4	Loitering in corridors during class sessions;				
5	Disruptive use of mobile phones or other similar communication devices during classes				
6	Wearing of inappropriate campus attire				
7	Violation of parking				
8	Activating the fire alarm without valid reason.	Written notice of warning	Probation	Suspension	Suspension
9	Misbehavior during school programs, activities, or competitions;				
10	Improper use of restrooms, lavatories, and washrooms.				

<p>11</p>	<p>Eating and/or drinking inside the classrooms, laboratories, or other non-eating/drinking areas.</p>	<p>Written notice of warning</p>	<p>Probation</p>	<p>Suspension</p>	<p>Suspension</p>
<p>12</p>	<p>Disrespect for Mapúa MCL symbols or national symbols;</p>				

Administration of Student Discipline Procedure

1. The concerned Mapúa MCL community member reports an incident of student infraction through a written incident report, backed-up by verifiable evidence. The incident report is addressed and submitted to the Prefect of Discipline. Faculty members have the authority to censure and advise students for less serious misconduct committed inside the classroom. For serious misconduct, a formal complaint through an incident report should be filed by the concerned faculty at the Center for Student Activities and
2. Discipline (CSAD) for appropriate action.
3. The Prefect of Discipline summons the student (Respondent) reported to have committed the infraction and issues him a Student Infraction Notice wherein he is required to explain in writing why he should not be sanctioned/ penalized.
4. The Respondent submits his letter of explanation. If he admits to the infraction, the Prefect of Discipline shall give the corresponding disciplinary action as specified in the Student Catalogue.
5. If the Respondent does not admit to the infraction, the Prefect of Discipline either:
 - a. Investigates, conducts hearings to validate facts gathered, and decides the case; or
 - b. Convenes a Committee on Decorum (COD), if corresponding sanction for offense is heavier than probation, to investigate, conduct hearings to validate facts gathered, and make a consensus decision on the case. The COD shall include a legal counsel if the offense is punishable with two terms suspension or higher.

64

6. If the Respondent is in default, the Prefect of Discipline decides the case solely based on the incident report and verifiable evidence submitted by the concerned Mapúa MCL community member.
7. The Prefect of Discipline or COD secures the approval of the Vice President for Academic Affairs if the sanction decided is equivalent to suspension of 1 term or higher.
8. The Prefect of Discipline implements the sanction meted in the decision if the respondent is found guilty. He removes the case from the respondent's record if the latter is found not guilty and informs the parents of the decision.
9. The Respondent may appeal the decision to the Executive Vice President (EVP) within five (5) working days from the receipt of the decision.
10. The EVP renders final decision on the Respondent's appeal.

Standard Attire on Campus

General Consideration

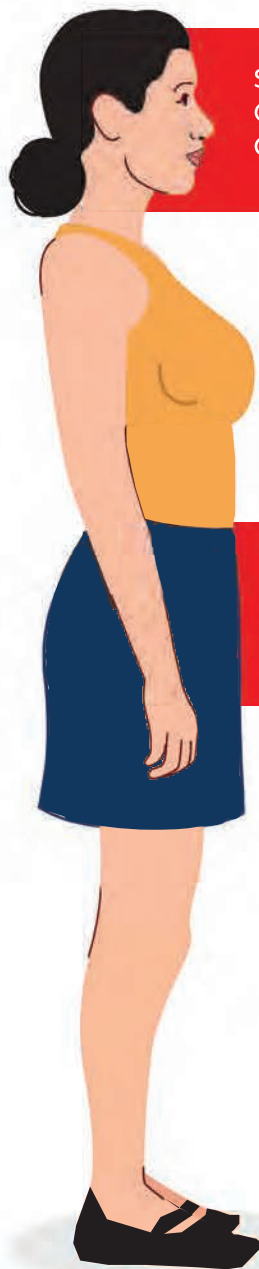
Students are enjoined to improve their personal appearance through neatness, simplicity, modesty, and decency. They are expected to wear proper attire within the campus during each of the terms and term breaks.

Mapúa MCL strongly discourages body piercing or display of tattoos, particularly anything vulgar or obscene; sexual; gang-or-drug-related; denoting membership in a gang; promoting ridicule or disrespect toward any person or group of persons; or featuring the use of weapons or violence. In case of doubt, please be reminded that there are companies and/or industries that by the nature of their service or industry do not hire applicants with tattoos, whether visible or covered, regardless of the image or nature of the same, and that therefore it might be more prudent to refrain from having permanent tattoos.

Mapúa MCL understands and recognizes that the students have a right to express themselves through dress and personal appearance; however, Mapúa MCL also has an obligation to create a learning environment where all members of the academic community are comfortable and not offended by inappropriate clothing.

Thus, students shall not wear apparel that is deemed disruptive or potentially disruptive to the classroom, to the educational process, to the environment, that presents health or safety concerns, or that contains visuals, lettering or symbols that are obscene, depicting violence, or profane. Students who fail to abide by the dress code, when advised by a school authority, shall be considered in violation of the dress code and will be subject to disciplinary action.

Classroom instructors, professors, security officers, admin and staff are considered school authorities and have the right to address violators and/or deny admission to students dressed in any of the prohibited attire. Any student deemed in violation of the student dress code shall be required to change into appropriate clothing. In this case, there shall be no further penalty. Please take note that this applies to both ONLINE and ON-CAMPUS school settings



SLEEVELESS ARE ALLOWED BUT WEARING AN OUTERWEAR LIKE BLAZER, BOLERO, CARDIGAN, OR JACKET IS REQUIRED.



DRESS, SKIRT, AND SHORT BELOW ARMLENGTH ARE ALLOWED



STRICTLY PROHIBITED

The school discourages anything vulgar or obscene, sexual, gang-or-drug related denoting membership in a gang, promoting ridicule or disrespect toward any person or group of persons, or featuring the use of weapons or violence. Thus, students shall not wear apparel that is deemed disruptive or potentially disruptive to the classroom.

Policies Governing Student Activities

Mapúa MCL allows students to conduct activities within and outside the campus in support of enriching student learning experiences. Student activities go through an approval process before they can be conducted. Nonetheless, Mapúa MCL reserves the right to cancel for due cause any authority previously granted to student organizers to conduct an approved activity.

Student activities that may be conducted are curricular, co-curricular, or non-curricular and may be in-campus or off-campus.

Curricular activities refer to activities stipulated in the syllabus. Co-curricular activities are attended alongside the standard study curriculum to enrich students' learning experience. Non-curricular activities refer to activities that students perform outside the normal curriculum. Activities are considered off-campus if they are undertaken outside the premises of Mapúa MCL.

- Mapúa MCL shall ensure that all student activities have gone through a process of approval prior to the conduct of the activities.
- Mapúa MCL reserves the right to cancel for cause any authority previously granted to any student organization to hold an affair.
- Mapúa MCL shall ensure that all non-curricular or co-curricular activities will not conflict with the official calendar of activities of the institution.
- Curricular and co-curricular activities shall take precedence over non-curricular activities of student organizations.
- Only field trips, off-campus seminars, plant visits, and similar co-curricular activities that are stipulated in the syllabus will be allowed.
- Students who will join off-campus activities that will require an overnight stay and longer must secure medical clearance from the Center for Health Services and Wellness.

- All student activities requiring service providers (transportation, insurance, etc.) must coordinate with the OSPGE office.
- Mapúa MCL shall ensure that any activity with fund-raising component will be reviewed and approved by the Office of the Vice President for Finance and the Office of the Executive Vice President,
- Mapúa MCL will ensure that no meetings or major non-curricular activities of any kind shall be allowed one week before and during the final examinations' week.
- Organizers of a postponed activity must inform the offices concerned and seek approval for the new time, date, and venue of the activity.
- Mapúa MCL shall ensure that all student activities will undergo a post-evaluation Process.

Policies Governing Student Organization

Mapúa MCL will encourage and promote the establishment, operation, and development of student organizations with objectives set to create and advance opportunities that will complement students' curricular progress, lead to relevant non-curricular endeavors, and develop and enhance leadership and teamwork.

- Mapúa MCL, through the Center for Student Activities and Discipline (CSAD), shall authorize the establishment of student organizations upon compliance with the requirements set by the institution.
- Mapúa MCL shall have the authority to regulate and supervise the operation as well as activities of all duly recognized student organizations which shall be confined only to scientific, technological, spiritual, cultural, civic, or sports related objectives and provided further, that these shall previously be approved by the CSAD.

- No student organization, or group of students or any individual student shall utilize or avail of the use of the name of the MAPÚA MALAYAN COLLEGES LAGUNA, its logo or emblem and/or the name, logo or emblem of any department, office or school in the College in any publication, be it a magazine, newsletter, newspaper, periodical, handbill or circular of any form. The publisher or circular of any publication shall be personally liable and responsible for the contents of the materials published or circulated. Mapúa MCL shall not be liable for the consequences arising from or in connection with the unofficial publications.
- No student organization, or group of students or any individual student shall utilize or avail of the use of the name of the MAPÚA MALAYAN COLLEGES LAGUNA, its logo or emblem and/or the name, logo or emblem of any department, office, or school in the College in any publication without the expressed approval of the Mapúa MCL Corporate Communications Office.
- Officially recognized student organizations may use the name MAPÚA MALAYAN COLLEGES LAGUNA (Mapúa MCL). The name should not, however, be directly or indirectly used in connection with any off-campus activity, without the prior approval of the Director for Student Services and the Executive Vice President.
- Officers and members of recognized student organizations shall represent Mapúa MCL in activities of existing or proposed national or international youth groups or shall endorse their objectives upon approval by the Administrators. (Director for Student Services or the Vice President for Academic Affairs, and the Executive Vice President)
- Mapúa MCL shall establish a system of graduated levels of accreditation of student organizations based on merit, performance, achievement to promote membership advancement and organizational development, as well as institutional relevance and significance.
- Mapúa MCL shall revoke the recognition of any recognized student organization that violates or circumvents this set of rules and regulations) and shall have its officers and members subjected to individual and collective disciplinary action.)
- Mapúa MCL should encourage student organizations to set acceptable/minimum standards of qualifications of officers.

- Each student organization shall have a full-time faculty adviser or regular employee chosen by its officers and members. The adviser shall exercise supervisory functions over the student organization in close coordination with the CSAD, and specific functions, authority, and responsibilities defined in the implementing rules and regulations.
- Mapúa MCL shall establish a Committee on Student Organizations responsible for screening, assessing, evaluating, and recommending the recognition and / or accreditation of student organizations.

Conduct of Student Activities

Mapúa MCL allows students to conduct activities within and outside the campus in support of enriching student learning experiences. Student activities go through an approval process before they can be conducted. Nonetheless, Mapúa MCL reserves the right to cancel for due cause any authority previously granted to student organizers to conduct an approved activity.

Student activities that may be conducted are curricular, co-curricular, or non-curricular and may be in-campus or off-campus.

Curricular activities refer to activities that are stipulated in the syllabus. Co-curricular activities are variety of activities that are attended alongside the standard study curriculum to enrich students' learning experience. Non-curricular activities refer to such activities that students perform outside the realm of the normal curriculum. Activities are considered off-campus if they are undertaken outside the premises of Mapúa MCL.

Off-campus curricular activities are an integral part of the instructional program. All students are expected to attend the scheduled off-campus activity since it is part of the regularly scheduled class time." They are classified as follows: (CMO No. 63, s. 2017)

a. Educational Tours – refer to off campus learning activities involving mobility of students with the supervision of authorized personnel outside the premises of Mapúa MCL which lasts for more than one (1) day, and involves relatively more places of



destination than a field trip in accordance with specific degree program requirements.

b. Field Trips – refer to off campus learning activities involving mobility of students with the supervision of authorized personnel outside the premises of Mapúa MCL but is relatively of shorter duration lasting only one (1) day and with fewer places of destination.

c. Field Study/Experiential Learning/Related Learning Experience – refer to off- campus activities which are congruent to the learning outcomes of the course in terms of time and context. These activities require substantial off-campus learning as curriculum delivery

Off-campus curricular activities for the entire school year are pre-approved before the start of the school year by the VPAA.

Co-curricular activities, when conducted off-campus, may include but are not limited to technical seminars, program related conferences, conventions, and competitions.

Non-curricular activities are activities performed by students that fall outside the realm of the normal curriculum. These include but are not limited to sports competitions, team building, leadership training, outreach programs, cultural shows, prayer meetings, general assemblies, and the like.

The conduct of the off-campus activities must abide by CMO No. 63, s. 2017 as stipulated in the Mapúa MCL Standard Practice Guide for the Conduct of Student Activities.

Following are the guidelines that must be observed in conducting student activities:

1. Students or student organizations or student councils who wish to conduct an in-campus non-curricular activity must fill out a Student Activity Form.

2. A Student Activity Form must be filed to the CSAD at least seven days (7) before the scheduled activity date. It is important to plan the activity in advance. If the activity is filed in less than a week, the approving office shall have the prerogative to disapprove it.



3. The adviser or student organizers of major student activities shall not finalize any arrangement or contract with the outsiders, e.g., performers, sponsors, guests, speakers, resource persons, off-campus venue providers personnel, plant personnel, factory representatives, transportation company staff, etc., until such arrangement or contract has been reviewed by the Office of the SVP for Administration and Legal and approved by the Office of the Executive Vice President. Violation of this rule shall be ground for the cancellation of the approval the Student Activity.
4. The application form shall be accompanied by the following:
 - a. a detailed agenda or program of the activity
 - b. a financial projection, including individual contributions, ticket sales, donations, sponsorships, etc.
5. The reviewing and approving offices shall have the authority to ask for additional information or documents from the organizer, if necessary, before approving the activity. It shall check and note if the application guidelines are followed.
6. Major student activity pertains to an activity involving 60% or more of the members of the class or organization. Minor student activity pertains to the activities involving less than 60% of the members of the class or organization.
7. For a non-curricular activity that has a fund-raising component (raffle draw, ticket selling, or donation), the activity shall be first discussed with the Office of the Vice President for Finance, endorsed by the Student Affairs Office, and approved by the Office of the Executive Vice President before its implementation
8. An off-campus activity shall require an Off Campus Activity Application Form and a Parental Consent Form. The form must be duly signed by the parent or the guardian. A “No Parent’s Consent, No Outside Trip” policy shall be implemented.
9. The organizer (adviser or class officer) shall provide the CSAD a duly accomplished Local Off-Campus Activities Report of Compliance Form which complete documentation attachments at least:



- a. 7 days before the conduct of the activity – for non-educational tours/non- field trips.
- b. 15 days before the conduct of the activity – for educational tours and field trips

NOTE: A duly notarized Certificate of Compliance shall also be submitted by the organizer to the CHED Regional Office at least 15 days before the conduct of the activity. A photo-copy of the receiving copy of the Certificate of Compliance must be submitted to the CSAD thereafter.

10. The organizer shall conduct a post-evaluation of the activity. The post-event evaluation forms for student activity are available at the CSAD. At least 30% or more of the participants are expected to fill out the evaluation forms.

11. Within three (3) days after holding the activity, the organizer shall submit the evaluation report together with the evaluation forms to:

- a. the College Dean through the Program Chair, for off-campus curricular and co-curricular activities;
- b. the Student Affairs Director through the CSAD Head, for off-campus and in-campus non-curricular activities;

NOTE: This evaluation report should include the executive summary of the activity, the participants' evaluation summary, and statement of actual revenue and expenses. The Program Chair / CSAD Head shall verify the evaluation report. Any irregularity or anomaly found shall be a ground for disciplinary action on the organizer or on those directly responsible for the activity and shall be endorsed to the CSAD for appropriate action.

12. The evaluation report shall be used in the planning and in applying improvement measures on future student activities. Before the end of the school year, the evaluation results shall be presented to their respective student organizations, advisers and CSAD.

13. Student activities are not allowed one (1) week before the final examinations and within the final examination week.

Policies Governing Student Organization

Recognition and Accreditation of Student Organizations

Mapúa MCL (Mapúa MCL) will encourage and promote the establishment, operation, and development of student organizations with objectives set to create and advance opportunities that will lead to relevant non-curricular endeavors, and develop and enhance leadership and teamwork.

Mapúa MCL, through the Center for Student Activities and Discipline (CSAD), shall authorize the establishment of student organizations upon compliance with the requirements set by the institution.

Mapúa MCL shall have the authority to regulate and supervise the operation as well as activities of all duly recognized student organizations which shall be confined only to scientific, technological, spiritual, cultural, civic, or sports-related objectives and provided further, that these shall previously be approved by the CSAD.

Student organizations shall abide by acceptable/minimum standards of qualifications of their officers set by Mapúa MCL. Such standards must be integrated in their constitution and by-laws.

The recognition of any student organization that violates or circumvents Mapúa MCL rules and regulations may be revoked, and its officers and members subjected to individual and collective disciplinary action.

Mapúa MCL implements a system of graduated levels of accreditation of student organizations based on merit, performance, and achievement to promote membership advancement and organizational development, as well as institutional relevance and significance. The specific guidelines are issued to the student organizations upon approval or renewal of their recognition. Such guidelines are periodically reviewed and revised.

External Affiliations and Affairs of Student Organization

The following matters related to external affiliations and affairs of student organizations shall require the endorsement of the Student Affairs Director, the recommending approval of the Vice President for Academic Affairs, and final approval of the Executive Vice President:

1. Affiliating with outside or extramural organizations – In the event that a student organization is allowed to affiliate with outside or extramural organizations, the rules, regulations and policies of Mapúa MCL shall prevail over the rules, regulations and policies of the outside organization.

2. Establishment in Mapúa MCL of chapters of outside or extramural organizations

– Other requirements may be imposed upon such organizations before approval of recognition.

3. Representation of Mapúa MCL by officers and members of recognized student organizations in activities of existing or proposed national or international youth groups, or their endorsement of the objectives of such groups.

Any violation of this rule will mean the immediate cancellation and withdrawal of the recognition of the organization.

Use of Mapúa MCL Name and Mapúa MCL Official Logos

Officially recognized student organizations may use the name Mapúa MCL or Mapúa MCL. The name should not, however, be directly or indirectly used in connection with any off-campus activity, without the prior approval of the and the Executive Vice President, as recommended by Vice President for Academic Affairs, upon endorsement of the Student Affairs Director.

No student organization, or group of students or any individual student shall utilize or avail of the use of the name of Mapúa MCL,



its logo or emblem and/or the name, logo or emblem of any department, office or school in the College in any publication without the expressed approval of the Office for Corporate Communications.

Guidelines on Registration of Student Organization

1. Any group of fifteen (15) students of Mapúa MCL may apply at CSAD to register a student organization for its recognition to operate provided, that for the specific purpose of registration of such student organization, the total membership thereof shall not be less than fifteen (15) students at the time of the issuance of its certificate of registration.
2. Officially recognized student organizations are classified in accordance with the following categories namely:
 - a. Academic Student Organizations – program-based organizations
 - b. Non-Academic Student Organizations – non-program-based organizations. They shall be cultural, civic, spiritual, or sports and recreation in orientation.
3. No student organizations falling under any of the following categories shall be permitted to operate in Mapúa MCL:
 - a. Organizations with Greek letter names;
 - b. Organizations that are political in nature;
 - c. Organizations that practice religious or racial intolerance.
 - d. Organizations whose policies and practices are not in consonance with the rules and regulations of Mapúa MCL and the laws of the land.
5. No student organization shall be allowed to operate in Mapúa MCL without a constitution and by-laws approved by the Committee on Student Organizations. The official purposes and/or objectives of the organization shall be clearly stated in its constitution and by-laws.

6. The application for registration of a proposed student organization shall not be considered if there is already an existing organization with the same or similar name.

7. Officers of student organizations shall possess the following minimum qualifications:

For all officers:

a. Must be enrolled in the current term

b. Must be of good moral character / have no student discipline record.

c. For top 3 officers:

d. Must have been enrolled in Mapúa MCL for at least 3 regular terms.

e. Preferably with a GWA of at least 2.50 or better.

8. Upon issuance of the Certificate of Recognition to a new student organization, its interim set of officers automatically becomes its regular set of officers for the entire school year unless otherwise replaced in accordance with its constitution and by-laws.

9. The Committee on Student Organizations is responsible for screening, assessing, evaluating, and recommending the recognition and / or accreditation of student organizations. The Committee consists of the CSAD Head, a faculty, and a non-teaching staff designated by the Student Affairs Director with the approval of the VPAA.

10. Each student organization shall have an adviser who is a full-time Mapúa MCL faculty member or a regular non-teaching staff chosen by its officers and members. He shall be required to sign a letter of acceptance, signifying her willingness to act in an advisory capacity and to be held responsible to the Mapúa MCL Administration and to the government authorities for the proper conduct of the organization and its members.

11. The adviser shall exercise supervisory functions over the student organization in close coordination with the CSAD. The specific functions of the adviser are as follows:

a. Review, correct, revise, and submit for the approval of CSAD all proposed programs,

press releases and publications of the organization, and shall see to it that everything contained therein is in accordance with the Mapúa MCL rules and regulations and that the materials are decent and of good taste.

b. Submit all requests for permission to hold meetings and other activities of the organization to the CSAD and to the other concerned departments.

c. Certify all official letters and reports of the student organization and copies thereof before they are forwarded to the CSAD and other departments.

d. Review the constitution and by-laws of the student organization.

e. Check the qualifications of student nominees for elective positions of the organization and inform CSAD accordingly.

f. Supervise the election of officers and certify the election results and submit the same to CSAD.

g. Supervise all activities of the organization and submit written reports and evaluation results thereof to CSAD.

h. Help in promoting and instilling the core values, the mission, and the vision of Mapúa MCL to the officers and members of the student organization.

i. Be present in the general meetings and major affairs of the student organization and shall be jointly responsible with the officers for the conduct of such activities.

Guidelines on Recruitment for Membership of Student Organization

Admission for membership in the student organization shall be in accordance with the provisions of the approved constitution and bylaws of the organization and shall be in compliance with the following:

1. Every organization shall hold an open ceremony (not closed or secret) for admitting new members at least once a year.



2. Every candidate for admission to a student organization shall be informed beforehand of the proposed calendar of events and the estimated total amount of dues and expenses which the applicant will incur during the school year.
3. Only enrolled and bona fide Mapúa MCL students are eligible for active membership to any student organization. (College & SHS)
4. All applicants for membership below eighteen (18) years of age shall submit a written evidence of parental or guardian consent and duly approved by CSAD.
5. No hazing or initiation in any form shall be allowed.

Guidelines on the Management of Student Organization

Funds

Dues, Collections, And Fund Raising

1. Organization funds may only be sourced from officially approved fees, dues and contributions from own membership fund-raising raising projects or activities.
2. All funds derived from membership shall be correspondingly covered by a receipt issued by the organization Treasurer. Collections and dues shall not exceed the amount officially approved.
3. Fund raising projects/activities of any kind shall be officially endorsed by the Student Affairs Director for recommending approval of the Vice President for Finance, and approval of the Executive Vice President. A Fund Raising Activity Form shall be duly accomplished for this with necessary attachments as evidence of the financial viability of the activity.
4. Within one (1) week after an activity is held, a detailed and duly audited financial report of said activity must be submitted to CSAD.
5. Any amount that may accrue to the student organization, whether from voluntary contributions of the members or otherwise, shall likewise be included and/or accounted for in the financial report and a copy of the report thereof shall be submitted to CSAD.

6. Financial reports of activities shall be posted in a conspicuous place for the information of all concerned. Real time posting of such reports in the organization's social media group sites is highly encouraged.

Financial Record Book (Book of Accounts)

1. A Book of Accounts shall be maintained by each student organization, on which shall be indicated all collections and disbursements of the organization. It must be regularly readied for inspection by the organization adviser and the Head of CSAD.

Disbursements

1. Authority for all disbursements from the funds of the student organization shall be effected only upon the previous approval by its officers with the concurrence of the adviser of the organization.

2. The bank withdrawal slip for any amount withdrawn shall carry the signatures

of both the President and the Adviser of the organization. Furthermore, if the organization maintains a checking account, all checks shall be signed jointly by the President and the Adviser of the organization.

Audit and Report

1. Each student organization shall submit its financial statement on or before the end of term to CSAD and to the Office of the Vice President for Finance (end of school year).

2. The organization's financial statement, containing total receipts and expenditures, shall be prepared by the Treasurer, audited by the Auditor, approved by the President, and duly noted by the adviser of the organization.

3. CSAD may order that the financial statement of each student organization be audited

by a competent official of Mapúa MCL at least once every year, and that whenever there is a finding of misappropriation of the funds of the organization, the officers of the organization shall be held administratively liable jointly and severally without prejudice to criminal prosecution if the evidence so warrants.

Guidelines on the Formal Dissolution of a Student Organization

Formal Dissolution

When the dissolution of the student organization is through the voluntary action of its members, it shall be the responsibility of its President or governing officers (whichever is applicable), subject to the consultation with the adviser, to formally issue a corresponding written notice to CSAD, who shall record such dissolution in the official list of student organizations of Mapúa MCL.

Certificate Of Clearance

1. Whether the dissolution of the student organization is voluntary or otherwise the officers of the organization shall be required to secure a certificate of clearance for money, property, civil or criminal liabilities from the adviser and CSAD.
2. Dissolution of an organization does not absolve the organization from liabilities and responsibilities arising from previous activities for which they will still be held liable jointly and severally.

Guidelines on the Establishment and Organization of Student Councils

1. There will be one Supreme Student Council (SSC) composed of Representatives elected by bona fide students of the different academic departments. These Representatives shall elect from among themselves the officers of the SSC in accordance with its Constitution and By-Laws.
2. There will be one student council for each of the existing academic departments whose officers are provided for in its Constitution and By-Laws and are elected at large by bona fide students of each of the academic departments.
3. The duly elected officers of the student councils shall hold office for one academic year.
4. Student councils shall be under the supervision of their respective college deans / principal who shall designate a faculty adviser. The Supreme Student Council shall be under the supervision of the Student Affairs Director who shall likewise designate a faculty adviser.
5. Student Council Elections shall be held not later than the ninth (9th) week of the Third Term of the school year. The winners in the election shall serve their term for the next school year.
6. All student council officers shall have the following minimum qualifications:
 - a. A bonafide student of Mapúa MCL and must have already been enrolled for at least 3 terms at the time of his/her election.
 - b. A person of good moral character and must have no disciplinary action of any kind meted out to him/her.
 - c. No TWA of lower than 3.00 or its equivalent.
 - d. Not occupying any of the top 4 positions of any other Mapúa MCL student organization.

7. A voters' turnout of at least 50% of the total number of enrolled students for the academic department is necessary for the election of officers to be valid. In the event that the voter's turn out is less than 50%, a failure of election will be declared and re-voting will be conducted the following week. No student council will be recognized for the next school year for an academic department whose re-voting results into another a failure of election. The same academic department likewise have no representation in the Supreme Student Council.

8. The officers of each of the student councils shall be elected by a majority vote of the voters' turnout. In case where there is only one official candidate for the position, the voters are given the option to vote ABSTAIN. In case the ABSTAIN votes win, the position shall be declared vacant. The position shall be filled through a resolution of the winning officers in accordance with the Constitution and by-laws of the student council.

9. The incumbency of any officer of a student council shall be terminated for any of the following causes:

- a. Upon resignation of the officer from the position.
- b. Upon final approval of a competent authority of his/her application for leave of absence for at least two terms.
- c. Upon disqualification from re-enrollment during the academic year in his/her program of study.
- d. Upon illness or other cause which prevents him/her from discharging his/her functions.
- e. Upon his/her receipt of a written notice of suspension or dismissal issued by the Prefect of Students.

The replacement of such officer shall be carried out through a resolution of the incumbent officers of the concerned student council.

The Electoral Board

There shall be an Electoral Board consisting of a faculty and a non-teaching staff appointed by the Student Affairs Director with the approval of the VPAA. Ex-officio members of the Electoral Board are the outgoing President of the Supreme Student Council, CSAD Head as Deputy Chairman, and the Student Affairs Director as Chairman.

Functions Of The Electoral Board

The functions of the Electoral Board are as follows:

- a. To formulate and implement guidelines and procedures, as well as supervise the proper conduct and coordination of elections.
- b. To evaluate the qualifications of candidates.
- c. To investigate and settle protests against the results of the elections.
- d. To disqualify candidates who fail to comply with election requirements.
- e. To canvass and check all election results.
- f. To certify the results of elections and to submit them to the Executive Vice President.

Election Candidates Requirements

- a. Filing of application of candidacy certifying that the candidate is qualified and of good academic standing at the Center for Student Activities and Discipline (CSAD).
- b. Submission of Bio-data and photos of candidates.
- c. The certification of candidacy signed by the Dean (or authorized representative)
- d. Submission of party or individual platforms.

NOTE: Failure to satisfy the election requirements shall be sufficient ground for the disqualification of the candidate.

Official List Of Candidates

- a. The official list of candidates shall be released a day before the election campaign period.
- b. Any protest against the qualifications of the candidates must be filed before Election Day with the Electoral Board.

Campaign Period

- a. The campaign period shall commence two weeks before and end one day before the date of the election.
- b. Room to room campaign is subject to the approval of the Deans concerned.
- c. An official convocation may be held so that all official candidates can be presented to the electorate.

Election Day

- a. The elections shall be conducted on-line and held on the last day of the election week (Friday), from 8:00 AM till 5:00 PM.
- b. Campaigning is not allowed during Election Day.
- c. The canvassing of votes shall likewise be on-line.

Tie Breaker

In case of a tie, the winner shall be decided through a toss coin.

Tie Breaker

The Electoral Board shall proclaim the winning candidates for all positions. The copy of the list of duly elected Student Council officers shall be forwarded to the Deans, Vice President for Academic Affairs (VPAA), and the Executive Vice President (EVP).

APPENDICES

APPENDIX A – Republic Act No. 11053 or the “Anti-Hazing Act of 2018” (Amendment of Republic Act 8049 or the “Anti-Hazing Law of 1995)

APPENDIX B – CHED Memorandum Order No. 4 Series of 1995, “Preventive Measures Against Violence and Sanctions on Fraternities and Other Student Organizations”

APPENDIX C – Republic Act No. 7877 or the “Anti-Sexual Harassment Act of 1995”

APPENDIX D – Republic Act No. 9165 or “Comprehensive Dangerous Drugs Act of 2002”

APPENDIX E – Data Privacy Act of 2012

APPENDIX F – Mental Health Act of 2018

Mapúa MCL Student Handbook Agreement

I have read and understand the above policies, rules, and guidelines. I agree to abide by them while I am a student at Mapúa MCL.

I understand that if I violate any of these policies, rules, or guidelines, I may be subject to disciplinary action, up to and including expulsion from the college.

[Student Name and Signature with Date]